

## Basic Information

Product Name	Anti-Cytokeratin 7/KRT7 Antibody	
Gene Name	KRT7	
Source	Rabbit	
Isotype	IgG	
Species Reactivity	human, mouse, rat	
Tested Application	WB, IHC, ICC/IF	
Contents	500 ug/ml; Rabbit IgG in phosphate buffered saline, pH 7.4, 150mM NaCl, 0.02% sodium azide and 50% glycerol.	
Immunogen	A synthesized peptide derived from human Cytokeratin 7	
concentration	500 ug/ml	
Purification	Affinity-chromatography	
Observed MW	51KD	
Dilution Ratios	Western blot (WB): 1:400-800 Immunohistochemistry in paraffin section (IHC): 1:20-100 Immunocytochemistry/Immunofluorescence (ICC/IF): 1:20-100	

## Storage

12 months from date of receipt, -20°C as supplied. 6 months 2 to 8°C after reconstitution. Avoid repeated freezing and thawing.

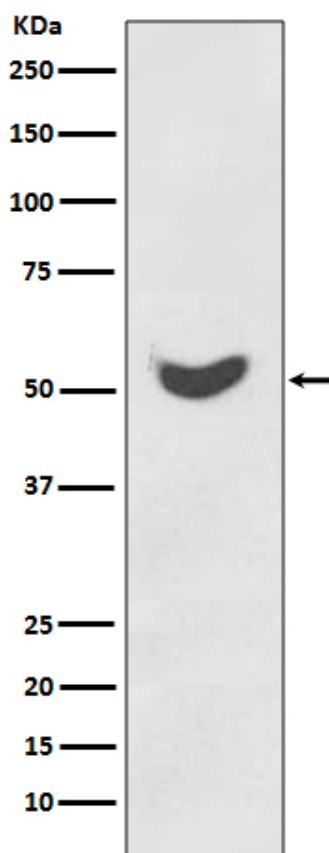
## Background Information

KRT7 is a type II keratin of simple nonkeratinizing epithelia. The deduced 489-amino acid protein has a calculated molecular mass of about 54 kD. K7 contains 4 central alpha-helical segments with heptad repeats of hydrophobic residues characteristic of a coiled-coil region. Within this domain, K7 shares 73% homology with epidermal K6B. KRT7 gene contains 9 exons and spans more than 15.6 kb. K7 gene is mapped to chromosome 12. Keratin 7 is expressed in a wide range of epithelial structures in humans.

## Reference

Anti-Cytokeratin 7/KRT7 Antibody被引用在3文献中。

## Selected Validation Data



Western blot analysis of Cytokeratin 7 expression in HeLa cell lysate.