

Basic Information

| | | |
|---------------------------|--|--|
| Product Name | Anti-Emmprin/CD147/BSG Antibody | |
| Gene Name | BSG | |
| Source | Rabbit | |
| Isotype | IgG | |
| Species Reactivity | human, mouse, rat | |
| Tested Application | WB, IHC, ICC/IF | |
| Contents | 500 ug/ml; Rabbit IgG in phosphate buffered saline, pH 7.4, 150mM NaCl, 0.02% sodium azide and 50% glycerol. | |
| Immunogen | A synthesized peptide derived from human CD147 | |
| concentration | 500 ug/ml | |
| Purification | Affinity-chromatography | |
| Observed MW | 35-60KD | |
| Dilution Ratios | Western blot (WB): 1:500-2000 Immunohistochemistry in paraffin section (IHC): 1:50-200 Immunocytochemistry/Immunofluorescence (ICC/IF): 1:50-200 (Boiling the paraffin sections in 10mM citrate buffer, pH 6.0, or PH 8.0 EDTA repair liquid for 20 mins is required for the staining of formalin/paraffin sections.) Optimal working dilutions must be determined by end user. | |

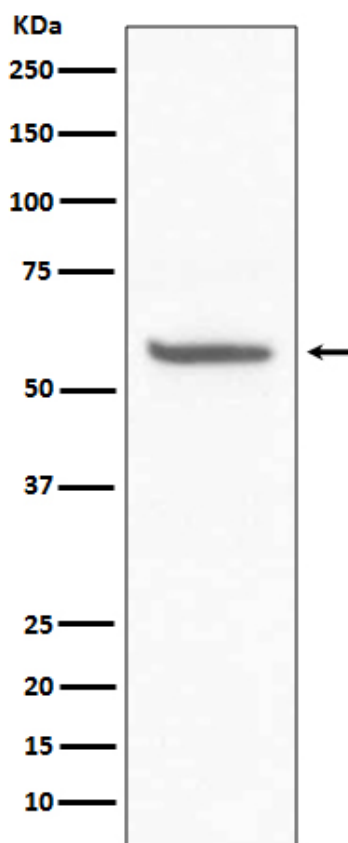
Storage

12 months from date of receipt, -20°C as supplied. 6 months 2 to 8°C after reconstitution. Avoid repeated freezing and thawing.

Background Information

Emmprin, extracellular matrix metalloproteinase inducer, also known as Emmprin (BSG) or cluster of differentiation 147 (CD147) is a protein that in humans is encoded by the Emmprin gene. The human BSG gene is mapped to 19p13.3. This protein is a determinant for the Ok blood group system. BSG has been shown to be an essential receptor on red blood cells for the malaria parasite. It is a member of the immunoglobulin superfamily, with a structure related to the putative primordial form of the family. As members of the immunoglobulin superfamily, it plays fundamental roles in intercellular recognition involved in various immunologic phenomena, differentiation, and development. BSG is thought also to play a role in intercellular recognition. It also regulates several distinct functions, such as spermatogenesis, expression of the monocarboxylate transporter and the responsiveness of lymphocytes. BSG is a type I integral membrane receptor that has many ligands, including the cyclophilin (CyP) proteins Cyp-A and Cyp-B and certain integrins. It is expressed by many cell types, including epithelial cells, endothelial cells and leukocytes.

Selected Validation Data



Western blot analysis of CD147 expression in Mouse kidney lysate.