

Basic Information

Product Name	Anti-CYP2E1 Antibody
Gene Name	CYP2E1
Source	Rabbit
Isotype	IgG
Species Reactivity	human, mouse, rat
Tested Application	WB
Contents	500 ug/ml; Rabbit IgG in phosphate buffered saline, pH 7.4, 150mM NaCl, 0.02% sodium azide and 50% glycerol.
Immunogen	A synthesized peptide derived from human CYP2E1
concentration	500 ug/ml
Purification	Affinity-chromatography
Observed MW	57KD
Dilution Ratios	Western blot (WB):1:500-2000

Storage

12 months from date of receipt, -20°C as supplied. 6 months 2 to 8°C after reconstitution. Avoid repeated freezing and thawing.

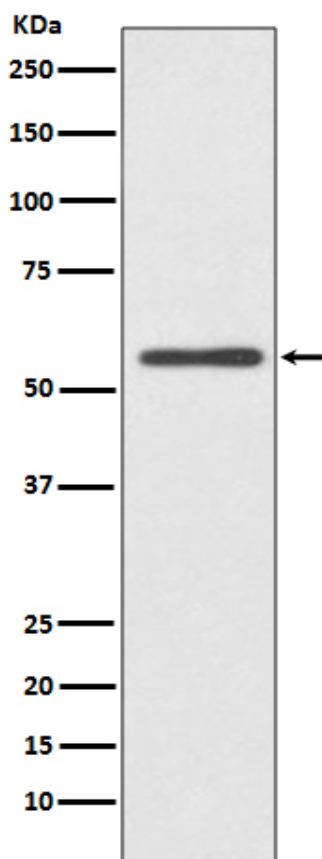
Background Information

Cytochrome P450 2E1 (abbreviated CYP2E1), a member of the cytochrome P450 mixed-function oxidase system, is involved in the metabolism of xenobiotics in the body. In humans, the CYP2E1 enzyme is encoded by the CYP2E1 gene. It is mapped to 10q26.3. While it is involved in the oxidative metabolism of a small range of substrates (mostly small polar molecules), there are many important drug interactions mediated by CYP2E1. Most drugs undergo deactivation by CYP2E1, either directly or by facilitated excretion from the body. Also, many substances are bioactivated by CYP2E1 to form their active compounds. In addition, CYP2E1 is an important enzyme for the conversion of ethanol to acetaldehyde and to acetate in humans. In the conversion sequence of acetyl-CoA to glucose, CYP2E1 transforms acetone via acetol into propylene glycol and methylglyoxal, the precursors of pyruvate, acetate and lactate.

Reference

Anti-CYP2E1 Antibody 被引用在1文献中。

Selected Validation Data



Western blot analysis of CYP2E1 expression in HeLa cell lysate.