

Basic Information

Product Name	Anti-CD163 Antibody	
Gene Name	CD163	
Source	Rabbit	
Isotype	IgG	
Species Reactivity	human	
Tested Application	WB, IHC	
Contents	500 ug/ml; Rabbit IgG in phosphate buffered saline, pH 7.4, 150mM NaCl, 0.02% sodium azide and 50% glycerol.	
Immunogen	A synthesized peptide derived from human CD163	
concentration	500 ug/ml	
Purification	Affinity-chromatography	
Observed MW	125-150KD	
Dilution Ratios	Western blot (WB): 1:500-2000 Immunohistochemistry in paraffin section (IHC): 1:20-100	

Storage

12 months from date of receipt, -20°C as supplied. 6 months 2 to 8°C after reconstitution. Avoid repeated freezing and thawing.

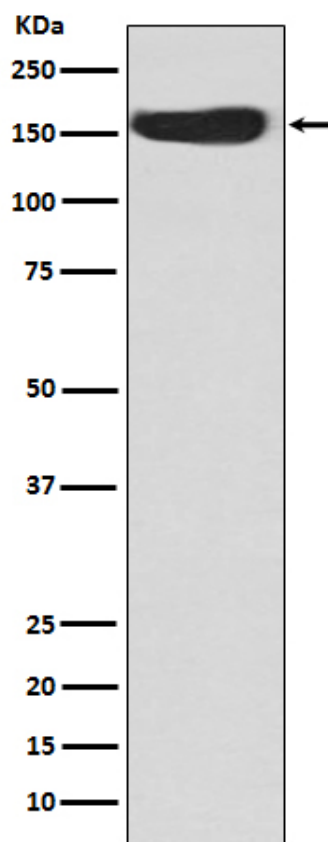
Background Information

CD163 (Cluster of Differentiation 163) is a protein that in humans is encoded by the CD163 gene. The protein encoded by this gene is a member of the scavenger receptor cysteine-rich (SRCR) superfamily, and is exclusively expressed in monocytes and macrophages. It functions as an acute phase-regulated receptor involved in the clearance and endocytosis of hemoglobin/haptoglobin complexes by macrophages, and may thereby protect tissues from free hemoglobin-mediated oxidative damage. This protein may also function as an innate immune sensor for bacteria and inducer of local inflammation. Alternatively spliced transcript variants encoding different isoforms have been described for this gene.

Reference

Anti-CD163 Antibody 被引用在1文献中。

Selected Validation Data



Western blot analysis of CD163 expression in Human fetal kidney lysate.