

Basic Information

Product Name	Anti-LOX Antibody	
Gene Name	LOX	
Source	Rabbit	
Isotype	IgG	
Species Reactivity	human,mouse,rat	
Tested Application	WB, IHC, FCM, ICC/IF, IP	
Contents	500 ug/ml;Rabbit IgG in phosphate buffered saline, pH 7.4, 150mM NaCl, 0.02% sodium azide and 50% glycerol.	
Immunogen	A synthesized peptide derived from human LOX	
concentration	500 ug/ml	
Purification	Affinity-chromatography	
Observed MW	50KD	
Dilution Ratios	Western blot (WB): 1:500-2000 Immunohistochemistry in paraffin section (IHC): 1:20-100 Immunocytochemistry/Immunofluorescence (ICC/IF): 1:20-100 Immunoprecipitation: 1:20 Flow cytometry (FCM): 1:20	

Storage

12 months from date of receipt, -20°C as supplied. 6 months 2 to 8°C after reconstitution. Avoid repeated freezing and thawing.

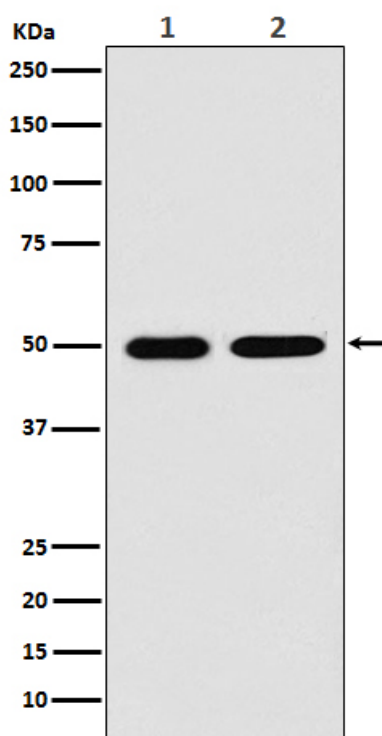
Background Information

Lysyl oxidase (LOX), also known as protein-lysine 6-oxidase, is an enzyme that, in humans, is encoded by the LOX gene. It is mapped to 5q23.1. This gene encodes a member of the lysyl oxidase family of proteins. Alternative splicing results in multiple transcript variants, at least one of which encodes a preproprotein that is proteolytically processed to generate a regulatory propeptide and the mature enzyme. The copper-dependent amine oxidase activity of this enzyme functions in the crosslinking of collagens and elastin, while the propeptide may play a role in tumor suppression. In addition, defects in this gene have been linked with predisposition to thoracic aortic aneurysms and dissections.

Reference

Anti-LOX Antibody被引用在1文献中。

Selected Validation Data



Western blot analysis of LOX expression in (1) Jurkat cell lysate; (2) Mouse brain lysate.