

Basic Information

Product Name	Anti-Claudin 1/CLDN1 Antibody
Gene Name	CLDN1
Source	Rabbit
Isotype	IgG
Species Reactivity	human, mouse, rat
Tested Application	WB
Contents	500 ug/ml; Rabbit IgG in phosphate buffered saline, pH 7.4, 150mM NaCl, 0.02% sodium azide and 50% glycerol.
Immunogen	A synthesized peptide derived from human Claudin 1
concentration	500 ug/ml
Purification	Affinity-chromatography
Observed MW	19KD
Dilution Ratios	Western blot (WB):1:500-2000

Storage

12 months from date of receipt, -20°C as supplied. 6 months 2 to 8°C after reconstitution. Avoid repeated freezing and thawing.

Background Information

Claudin-1 is a protein that in humans is encoded by the CLDN1 gene. Tight junctions represent one mode of cell-to-cell adhesion in epithelial or endothelial cell sheets, forming continuous seals around cells and serving as a physical barrier to prevent solutes and water from passing freely through the paracellular space. These junctions are comprised of sets of continuous networking strands in the outwardly facing cytoplasmic leaflet, with complementary grooves in the inwardly facing extracytoplasmic leaflet. The protein encoded by this gene, a member of the claudin family, is an integral membrane protein and a component of tight junction strands. Loss of function mutations result in neonatal ichthyosis-sclerosing cholangitis syndrome.

Reference

Anti-Claudin 1/CLDN1 Antibody被引用在1文献中。

Selected Validation Data

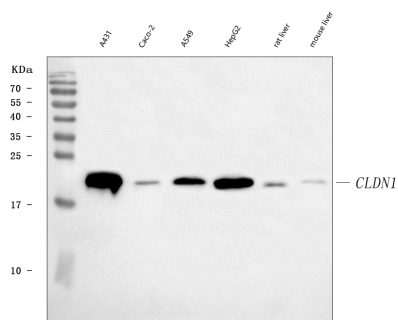


Figure 1. Western blot analysis of anti- CLDN1 antibody (BM5140).

The sample well of each lane was loaded with 50ug of sample under reducing conditions.

Lane 1: A431 whole cell lysates,

Lane 2: Caco-2 whole cell lysates,

Lane 3: A549 whole cell lysates,

Lane 4: HepG2 whole cell lysates,

Lane 5: rat liver tissue lysates,

Lane 6: mouse liver tissue lysates.

Use mouse anti- CLDN1 1:1000, probed with a goat anti-mouse IgG-HRP secondary antibody. The signal is developed using an Enhanced Chemiluminescent detection (ECL) kit (Catalog # EK1002). A specific band was detected for CLDN1 at approximately 19KD. The expected band size for CLDN1 is at 23KD.