

Basic Information

Product Name	Anti-Beclin 1/BECN1 Antibody	
Gene Name	BECN1	
Source	Rabbit	
Isotype	IgG	
Species Reactivity	human	
Tested Application	WB, IHC, ICC/IF	
Contents	500 ug/ml; Rabbit IgG in phosphate buffered saline, pH 7.4, 150mM NaCl, 0.02% sodium azide and 50% glycerol.	
Immunogen	A synthesized peptide derived from human Beclin 1	
concentration	500 ug/ml	
Purification	Affinity-chromatography	
Observed MW	52-60KD	
Dilution Ratios	Western blot (WB): 1:500-2000 Immunohistochemistry in paraffin section (IHC): 1:20-100 Immunocytochemistry/Immunofluorescence (ICC/IF): 1:20-100	

Storage

12 months from date of receipt, -20°C as supplied. 6 months 2 to 8°C after reconstitution. Avoid repeated freezing and thawing.

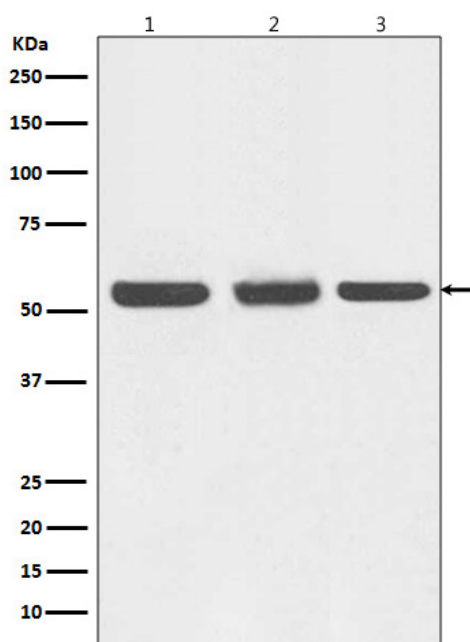
Background Information

Beclin-1, also known as also known as ATG6 or VPS30 is a protein that in humans is encoded by the BECN1 gene. Beclin-1 and its binding partner class III phosphoinositide 3-kinase (PI3K), also named Vps34, are required for the initiation of the formation of the autophagosome in autophagy. This gene participates in the regulation of autophagy and has an important role in development, tumorigenesis, and neurodegeneration. Schizophrenia is associated with low levels of Beclin-1 in the hippocampus of the affected which causes diminished autophagy which in turn results in increased neuronal cell death. It has been found that beclin-1 can promote autophagy in autophagy-defective yeast with a targeted disruption of *apg6/vps30*, and in human MCF7 breast carcinoma cells.

Reference

Anti-Beclin 1/BECN1 Antibody被引用在1文献中。

Selected Validation Data



Western blot analysis of Beclin 1 expression in (1) HEK293 cell lysate; (2) NIH/3T3 cell lysate; (3) C6 cell lysate.