

Basic Information

Product Name	Anti-GFP-Tag Antibody
Gene Name	GFP
Source	Mouse
Isotype	IgG1
Species Reactivity	All species
Tested Application	WB
Contents	Rabbit IgG in phosphate buffered saline,pH7.4,150mM NaCl,0.02% sodium azide and 50% glycerol.
Immunogen	Full-length GFP protein
concentration	500ug/ml
Purification	Affinity-chromatography
Observed MW	27KD
Dilution Ratios	Western blot (WB):1:1000-5000

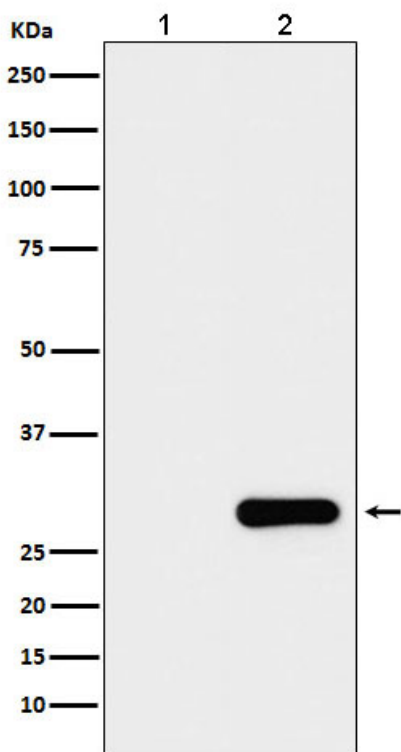
Storage

12 months from date of receipt, -20°C as supplied. 6 months 2 to 8°C after reconstitution. Avoid repeated freezing and thawing.

Background Information

Green fluorescent protein(GFP) has been engineered to produce a vast number of variously colored mutants, fusion proteins, and biosensors. Fluorescent proteins and its mutated allelic forms, blue, cyan and yellow have become a useful and ubiquitous tool for making chimeric proteins, where they function as a fluorescent protein tag. Typically they tolerate N- and C-terminal fusion to a broad variety of proteins.

Selected Validation Data



Western blot analysis of GFP protein expression in (1) 293T cell lysate; (2) 293T cell transfected with GFP protein lysate.