

Basic Information

Product Name	Anti-NRF1 Antibody
Gene Name	NRF1
Source	Rabbit
Isotype	IgG
Species Reactivity	human, mouse, rat
Tested Application	WB
Contents	Rabbit IgG in phosphate buffered saline, pH 7.4, 150mM NaCl, 0.02% sodium azide and 50% glycerol.
Immunogen	A synthesized peptide derived from human NRF1 Transcription factor that activates the expression of the EIF2S1 (EIF2-alpha) gene. Links the transcriptional modulation of key metabolic genes to cellular growth and development. Implicated in the control of nuclear genes required for respiration, heme biosynthesis, and mitochondrial DNA transcription and replication.
concentration	500 ug/ml
Purification	Affinity-chromatography
Observed MW	68KD
Dilution Ratios	Western blot (WB):1:500-2000

Storage

12 months from date of receipt, -20°C as supplied. 6 months 2 to 8°C after reconstitution. Avoid repeated freezing and thawing.

Background Information

Nuclear respiratory factor 1, is also known as NRF1. This gene encodes a protein that homodimerizes and functions as a transcription factor which activates the expression of some key metabolic genes regulating cellular growth and nuclear genes required for respiration, heme biosynthesis, and mitochondrial DNA transcription and replication. The protein has also been associated with the regulation of neurite outgrowth. Alternative splicing results in multiple transcript variants. Confusion has occurred in bibliographic databases due to the shared symbol of NRF1 for this gene and for "nuclear factor (erythroid-derived 2)-like 1" which has an official symbol of NFE2L1.

Selected Validation Data

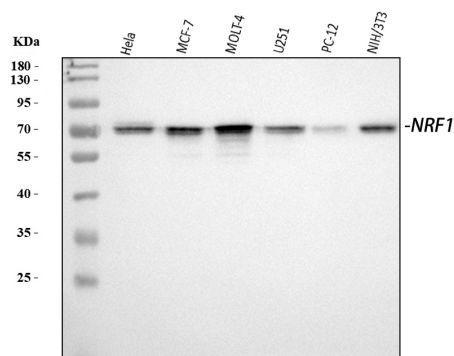


Figure 1. Western blot analysis of anti- NRF1 antibody (BM5449).

The sample well of each lane was loaded with 50ug of sample under reducing conditions.

Lane 1: HELA whole cell lysates,

Lane 2: MCF-7 whole cell lysates,

Lane 3: MOLT-4 whole cell lysates,

Lane 4: U251 whole cell lysates,

Lane 5: PC-12 whole cell lysates,

Lane 6: NIH/3T3 whole cell lysates.

Use rabbit anti- NRF1 1:1000, probed with a goat anti-rabbit IgG-

HRP secondary antibody. The signal is developed using an

Enhanced Chemiluminescent detection (ECL) kit (Catalog #

EK1002). A specific band was detected for NRF1 at approximately

70KD. The expected band size for NRF1 is at 54KD.