

Basic Information

Product Name	Anti-Glucagon/GCG Antibody
Gene Name	GCG
Source	Rabbit
Isotype	IgG
Species Reactivity	human
Tested Application	WB
Contents	Rabbit IgG in phosphate buffered saline , pH 7.4, 150mM NaCl, 0.02% sodium azide and 50% glycerol.
Immunogen	A synthesized peptide derived from human GLP2
concentration	500 ug/ml
Observed MW	4KD
Dilution Ratios	Western blot (WB):1:100-400

Storage

12 months from date of receipt, -20°C as supplied. 6 months 2 to 8°C after reconstitution. Avoid repeated freezing and thawing.

Background Information

Human GLP2 (glucagon like peptide 2) is a peptide hormone of the glucagon family produced by the L cells of the intestinal mucosa and originates from the same prohormone as glucagon.

Selected Validation Data

KDa

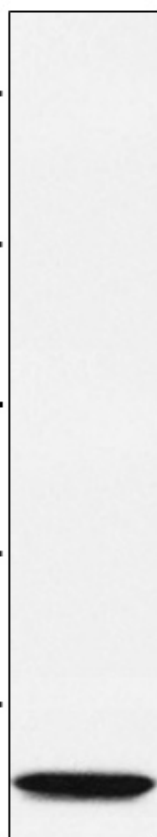
37

25

20

15

10



Western blot analysis of GLP2 expression in GLP2 recombinant protein lysate.