

## Basic Information

<b>Product Name</b>	Anti-Myc Tag Antibody (Clone#10D11)
<b>Source</b>	Mouse
<b>Isotype</b>	IgG1
<b>Species Reactivity</b>	All species
<b>Tested Application</b>	Dot blot, ELISA, WB
<b>Contents</b>	500ug/ml antibody with PBS , 0.02% NaN3 , 1mg BSA and 50% glycerol.
<b>Immunogen</b>	This antibody is produced by immunizing animals with a synthetic Myc tag peptide corresponding to KLH.
<b>concentration</b>	0.5mg/ml
<b>Observed MW</b>	47KD
<b>Dilution Ratios</b>	Western blot (WB) :1:500-5000

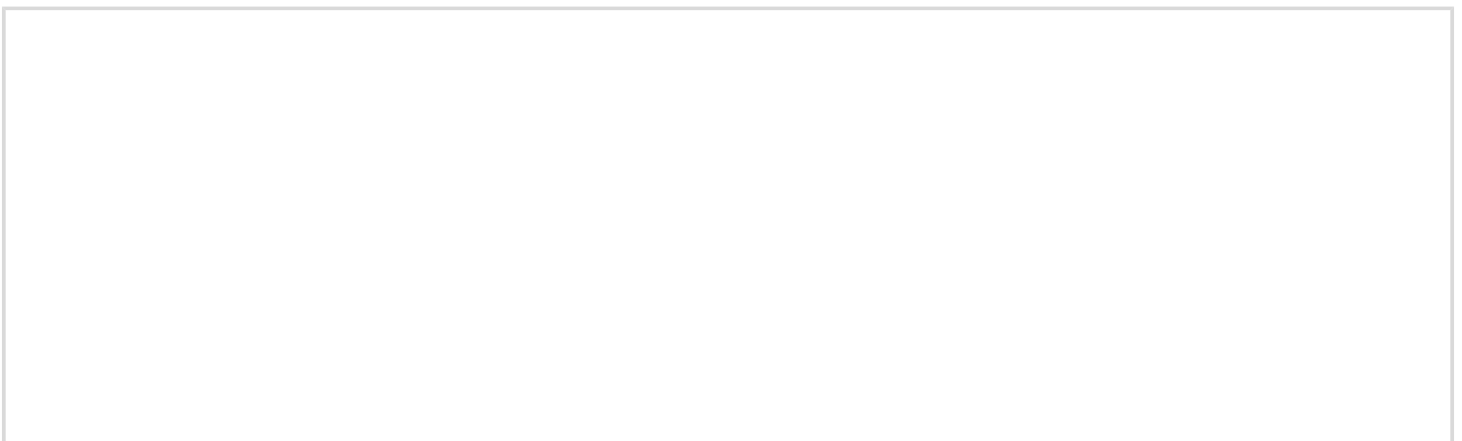
## Storage

12 months from date of receipt, -20°C as supplied. 6 months 2 to 8°C after reconstitution. Avoid repeated freezing and thawing.

## Background Information

A Myc tag is a polypeptide protein tag derived from the c-myc gene product that can be added to a protein using recombinant DNA technology, The myc tag antibody can be used in detecting the recombinant protein with a myc tag for many purposes, for example cellular localization studies by immunofluorescence or detection by Western blotting.

## Selected Validation Data



Product datasheet

# Anti-Myc Tag Antibody (Clone#10D11)

Catalog Number: M00026-2

# BOSTER

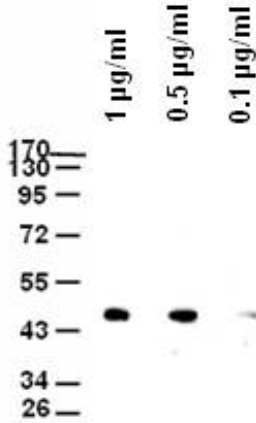
antibody and ELISA experts

**BOSTER BIOLOGICAL TECHNOLOGY**

Special NO.1, International Enterprise Center,  
2nd Guanshan Road, Wuhan, China

Web: [www.boster.com.cn](http://www.boster.com.cn) Phone: +86 027-67845390 Fax: +86 027-67845390 Email: [boster@boster.com.cn](mailto:boster@boster.com.cn)

## Anti-Myc Monoclonal Antibody



Western blot analysis of different concentration of Anti-Myc Tag(10D11) Monoclonal Antibody (M00026-2)

**Blocking:** Incubate the membrane with 5% Non-Fat Milk, 1PBS, 4 overnight

**Antibody Incubation:** Diluted antibody in 5% Non-Fat Milk, 1TBS, 0.1% Tween-20, RT, 30mins