

Basic Information

Product Name	Anti-Emmprin/CD147/BSG Antibody (Clone#7H5E7)	
Gene Name	BSG	
Source	Mouse	
Isotype	IgG2a	
Species Reactivity	human, mouse	
Tested Application	WB, IHC, IF, FCM	
Contents	500 ug/ml antibody with PBS , 0.02% Na ₂ S ₂ O ₃ , 1 mg BSA and 50% glycerol.	
Immunogen	E.coli-derived human CD147/Emmprin recombinant protein (Position: E138-A323). Human CD147/Emmprin shares 51.1% and 51.9% amino acid (aa) sequence identity with mouse and rat CD147/Emmprin, respectively.	
concentration	500 ug/ml	
Purification	protein G purified.	
Observed MW	35-60KD	
Dilution Ratios	Western blot(WB): 1:500-2000 Immunohistochemistry in paraffin section (IHC): 1:50-400 Immunohistochemistry in paraffin section (IHC): 1:50-400 Flow cytometry (FCM): 1-3μg/1x10 ⁶ cells (Boiling the paraffin sections in 10mM citrate buffer,pH6.0,or PH8.0 EDTA repair liquid for 20 mins is required for the staining of formalin/paraffin sections.) Optimal working dilutions must be determined by end user.	

Storage

12 months from date of receipt, -20°C as supplied. 6 months 2 to 8°C after reconstitution. Avoid repeated freezing and thawing.

Background Information

Emmprin, extracellular matrix metalloproteinase inducer, also known as Emmprin (BSG) or cluster of differentiation 147 (CD147) is a protein that in humans is encoded by the Emmprin gene. The human BSG gene is mapped to 19p13.3. This protein is a determinant for the Ok blood group system. BSG has been shown to be an essential receptor on red blood cells for the malaria parasite. It is a member of the immunoglobulin superfamily, with a structure related to the putative primordial form of the family. As members of the immunoglobulin superfamily, it plays fundamental roles in intercellular recognition involved in various immunologic phenomena, differentiation, and development. BSG is thought also to play a role in intercellular recognition. It also regulates several distinct functions, such as spermatogenesis, expression of the monocarboxylate transporter and the responsiveness of lymphocytes. BSG is a type I integral membrane receptor that has many ligands, including the cyclophilin (CyP) proteins Cyp-A and Cyp-B and certain integrins. It is expressed by many cell types, including epithelial cells, endothelial cells and leukocytes.

Selected Validation Data

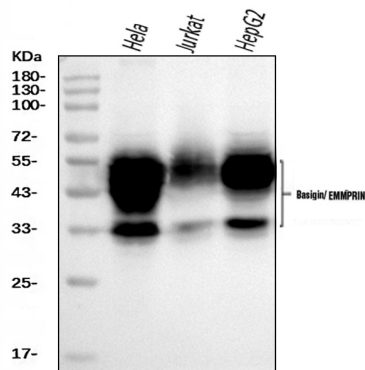


Figure 1. Western blot analysis of anti- emmprin/CD147 Antibody (M00248-5). The sample well of each lane was loaded with 50ug of sample under reducing conditions.

Lane 1: HeLa whole cell lysates,

Lane 2: Jurkat whole cell lysates,

Lane 3: HepG2 whole cell lysates.

Use mouse anti- emmprin 1:1000, probed with a goat anti- mouse IgG-HRP secondary antibody. The signal is developed using an Enhanced Chemiluminescent detection (ECL) kit (Catalog # EK1001). A specific band was detected for emmprin at approximately 35-60kd. The expected band size for emmprin is at 42KD.