

## Basic Information

<b>Product Name</b>	Anti-Caspase 3/CASP3 Antibody (Clone#30C96)
<b>Gene Name</b>	CASP3
<b>Source</b>	Rabbit
<b>Isotype</b>	IgG
<b>Species Reactivity</b>	human
<b>Tested Application</b>	WB, IHC, IP
<b>Contents</b>	Rabbit IgG in phosphate buffered saline, pH 7.4, 150mM NaCl, 0.02% sodium azide and 50% glycerol, 0.5mg/ml BSA.
<b>Immunogen</b>	A synthesized peptide derived from human Caspase 3
<b>concentration</b>	500 ug/ml
<b>Purification</b>	Affinity-chromatography
<b>Observed MW</b>	35KD
<b>Dilution Ratios</b>	Western blot (WB):1:500-2000 IHC 1:50-1:200 IP 1:50

## Storage

12 months from date of receipt, -20°C as supplied. 6 months 2 to 8°C after reconstitution. Avoid repeated freezing and thawing.

## Selected Validation Data

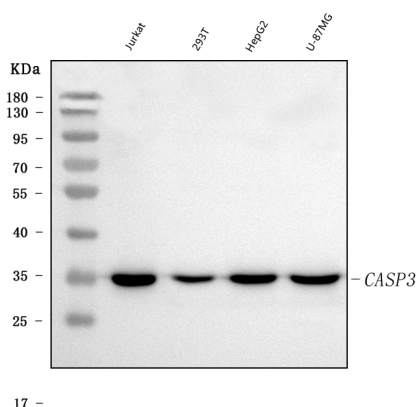


Figure 1. Western blot analysis of anti- CASP3 antibody (M00334-9).

The sample well of each lane was loaded with 50ug of sample under reducing conditions.

Lane 1: Jurkat whole cell lysates,

Lane 2: 293T whole cell lysates,

Lane 3: HepG2 whole cell lysates,

Lane 4: U-87MG whole cell lysates.

Use mouse anti- CASP3 1:1000, probed with a goat anti-mouse IgG-HRP secondary antibody. The signal is developed using an Enhanced Chemiluminescent detection (ECL) kit (Catalog # EK1002). A specific band was detected for CASP3 at approximately 35KD. The expected band size for CASP3 is at 32KD.

Product datasheet

**Anti-Caspase 3/CASP3 Antibody  
(Clone#30C96)**

**Catalog Number: M00334-9**

**BOSTER**

antibody and ELISA experts

**BOSTER BIOLOGICAL TECHNOLOGY**

Special NO.1, International Enterprise Center,  
2nd Guanshan Road, Wuhan, China

**Web:** [www.boster.com.cn](http://www.boster.com.cn) **Phone:** +86 027-67845390 **Fax:** +86 027-67845390 **Email:** [boster@boster.com.cn](mailto:boster@boster.com.cn)