

Basic Information

Product Name	Anti-CD31/PECAM1 Antibody (Clone#2D4)	
Gene Name	PECAM1	
Source	Mouse	
Isotype	IgG2b	
Species Reactivity	human	
Tested Application	WB, IHC, IHC-F	
Contents	500 ug/ml antibody with PBS , 0.02% NaN ₃ , 1 mg BSA and 50% glycerol.	
Immunogen	E.coli-derived human CD31 recombinant protein (Position: Q28-G382). Human CD31 shares 65% and 68% amino acid (aa) sequences identity with mouse and rat CD31, respectively.	
concentration	500 ug/ml	
Purification	protein G purified.	
Observed MW	120-130KD	
Dilution Ratios	Western blot(WB):	1:500-2000
	Immunohistochemistry(Paraffin-embedded Section):	1:50-400
	Immunohistochemistry(Frozen Section):	1:50-400
	(Boiling the paraffin sections in 10mM citrate buffer,pH6.0,or PH8.0 EDTA repair liquid for 20 mins is required for the staining of formalin/paraffin sections.) Optimal working dilutions must be determined by end user.	

Storage

12 months from date of receipt, -20°C as supplied. 6 months 2 to 8°C after reconstitution. Avoid repeated freezing and thawing.

Background Information

CD31 also known as Platelet endothelial cell adhesion molecule (PECAM-1), is a protein that in human is encoded by the PECAM1 gene. Encoded protein is a member of the immunoglobulin superfamily, CD31 is mapped to 17q23.3. CD31 is found on the surface of platelets, monocytes, neutrophils, and some types of T-cells, and makes up a large portion of endothelial cell intercellular junctions. It is demonstrated that CD31 expression on human PBSCs may positively affect both neutrophil and platelet engraftment. Meanwhile, CD31 is involved in leukocyte migration and angiogenesis, which are key components of venous thrombus resolution.

Reference

Anti-CD31/PECAM1 Antibody (Clone#2D4)被引用在1文献中。

Selected Validation Data

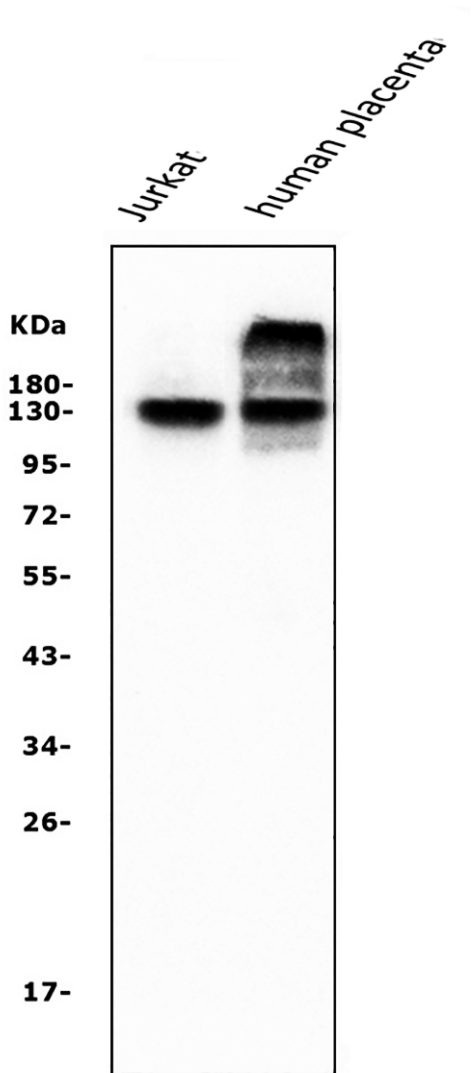


Figure 1. Western blot analysis of anti- PECAM1 antibody (M01513-4). The sample well of each lane was loaded with 50ug of sample under reducing conditions.

Lane 1: human Jurkat whole cell lysates,

Lane 2: human placenta tissue lysates, Use mouse anti- PECAM1 1:1000, probed with a goat anti-mouse IgG-HRP secondary antibody. The signal is developed using an Enhanced Chemiluminescent detection (ECL) kit (Catalog # EK1001). A specific band was detected for PECAM1 at approximately 120-130KD. The expected band size for PECAM1 is at 82KD.

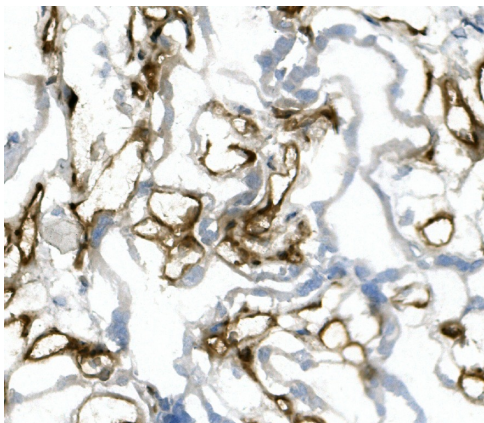


Figure 2. IHC analysis using anti-PECAM1 antibody (M01513-4). detected in paraffin-embedded section of human placenta tissue. Biotinylated goat anti-mouse IgG was used as secondary antibody. The tissue section was developed using Streptavidin-Biotin-Complex (SABC) (Catalog # SA1021) with DAB as the chromogen.