

Basic Information

Product Name	Anti-Cytokeratin 19/KRT19 Antibody (Clone#3D4)	
Gene Name	KRT19	
Source	Mouse	
Isotype	IgG1	
Species Reactivity	human	
Tested Application	WB, IHC, IF	
Contents	500 ug/ml antibody with PBS , 0.02% Na ₂ S ₂ O ₃ , 1 mg BSA and 50% glycerol.	
Immunogen	A synthetic peptide corresponding to a sequence at the C-terminus of human Cytokeratin 19 (334-372aa QLAHIQALISGIEAQLGDVRADSERQNQEYQRLMDIKSR), different from the related mouse and rat sequences by nine amino acids.	
concentration	500 ug/ml	
Purification	protein G purified.	
Observed MW	44KD	
Dilution Ratios	Western blot(WB): 1:500-2000 Immunohistochemistry in paraffin section (IHC): 1:50-400 Immunohistochemistry in paraffin section (IHC): 1:50-400 (Boiling the paraffin sections in 10mM citrate buffer,pH6.0,or PH8.0 EDTA repair liquid for 20 mins is required for the staining of formalin/paraffin sections.) Optimal working dilutions must be determined by end user.	

Storage

12 months from date of receipt, -20°C as supplied. 6 months 2 to 8°C after reconstitution. Avoid repeated freezing and thawing.

Background Information

Keratin, type I cytoskeletal 19 is a protein that in humans is encoded by the KRT19 gene. The protein encoded by this gene is a member of the keratin family. It is specifically expressed in the periderm, the transiently superficial layer that envelops the developing epidermis. The type I cytokeratins are clustered in a region of chromosome 17q12-q21. Due to its high sensitivity, KRT19 is the most used marker for the RT-PCR-mediated detection of tumor cells disseminated in lymph nodes, peripheral blood, and bone marrow of breast cancer patients. Keratin 19 is often used together with keratin 8 and keratin 18 to differentiate cells of epithelial origin from hematopoietic cells in tests that enumerate circulating tumor cells in blood.

Reference

Anti-Cytokeratin 19/KRT19 Antibody (Clone#3D4)被引用在1文献中。

Selected Validation Data

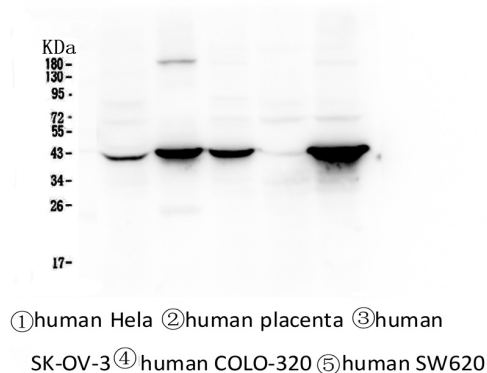


Figure 1. Western blot analysis of Cytokeratin 19 using anti-Cytokeratin 19 antibody (M02101-2). Electrophoresis was performed on a 5-20% SDS-PAGE gel at 70V (Stacking gel) / 90V (Resolving gel) for 2-3 hours. The sample well of each lane was loaded with 50ug of sample under reducing conditions. Lane 1: human Hela whole cell lysates, Lane 2: human placenta tissue lysates, Lane 3: human SK-OV-3 whole cell lysates, Lane 4: human COLO-320 whole cell lysates. After Electrophoresis, proteins were transferred to a Nitrocellulose membrane at 150mA for 50-90 minutes. Blocked the membrane with 5% Non-fat Milk/TBS for 1.5 hour at RT. The membrane was incubated with mouse anti-Cytokeratin 19 antigen affinity purified monoclonal antibody (Catalog # M02101-2) at 0.5 µg/mL overnight at 4°C, then washed with TBS-0.1%Tween 3 times with 5 minutes each and probed with a Biotin Conjugated goat anti-mouse IgG secondary antibody at a dilution of 1:10000 for 1.5 hour at RT. The signal is developed using an Enhanced Chemiluminescent detection (ECL) kit (Catalog # EK1001) with Tanon 5200 system.

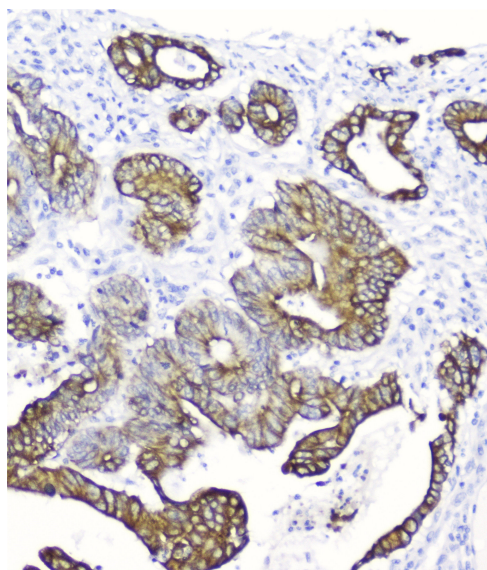


Figure 2. IHC analysis of Cytokeratin 19 using anti-Cytokeratin 19 antibody (M02101-2). Cytokeratin 19 was detected in paraffin-embedded section of human intestinal cancer tissue. Heat mediated antigen retrieval was performed in citrate buffer (pH6, epitope retrieval solution) for 20 mins. The tissue section was blocked with 10% goat serum. The tissue section was then incubated with 2µg/ml mouse anti-Cytokeratin 19 Antibody (M02101-2) overnight at 4°C. Biotinylated goat anti-mouse IgG was used as secondary antibody and incubated for 30 minutes at 37°C. The tissue section was developed using Streptavidin-Biotin-Complex (SABC)(Catalog # SA1021) with DAB as the chromogen.

**Anti-Cytokeratin 19/KRT19 Antibody
(Clone#3D4)**

Catalog Number: M02101-2

Web: www.boster.com.cn **Phone:** +86 027-67845390 **Fax:** +86 027-67845390 **Email:** boster@boster.com.cn

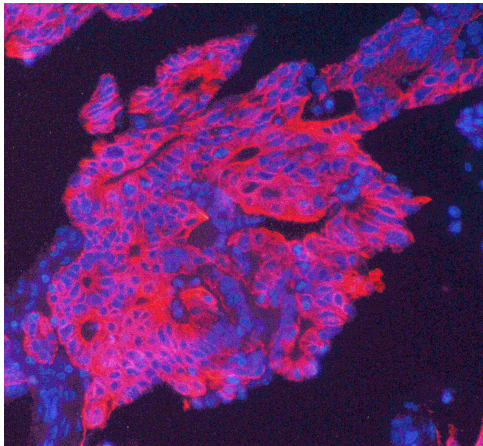


Figure 3. IF analysis of Cytokeratin 19 using anti- Cytokeratin 19 antibody (M02101-2).Cytokeratin 19 was detected in paraffin-embedded section of human intestinal cancer tissues. Heat mediated antigen retrieval was performed in citrate buffer (pH6, epitope retrieval solution) for 20 mins. The tissue section was blocked with 10% goat serum. The tissue section was then incubated with 1 μ g/mL mouse anti- Cytokeratin 19 Antibody (M02101-2) overnight at 4°C. DyLight550 Conjugated Goat Anti-Mouse IgG was used as secondary antibody at 1:200 dilution and incubated for 30 minutes at 37°C. Visualize using a fluorescence microscope and filter sets appropriate for the label used.