

Basic Information

Product Name	Anti-HSD3B1 Antibody (Clone#26H21)
Gene Name	HSD3B1
Source	Rabbit
Isotype	IgG
Species Reactivity	human
Tested Application	WB, ICC/IF
Contents	Rabbit IgG in phosphate buffered saline, pH 7.4, 150mM NaCl, 0.02% sodium azide and 50% glycerol, 0.5mg/ml BSA.
Immunogen	A synthesized peptide derived from human HSD3B1
concentration	500 ug/ml
Purification	Affinity-chromatography
Observed MW	42KD
Dilution Ratios	Western blot (WB):1:500-2000 ICC/IF: 1:50-1:200

Storage

12 months from date of receipt, -20°C as supplied. 6 months 2 to 8°C after reconstitution. Avoid repeated freezing and thawing.

Selected Validation Data

Product datasheet

**Anti-HSD3B1 Antibody
(Clone#26H21)**

Catalog Number: M02856-1

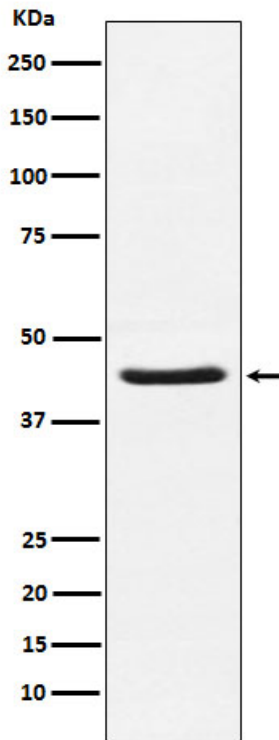
BOSTER

antibody and ELISA experts

BOSTER BIOLOGICAL TECHNOLOGY

Special NO.1, International Enterprise Center,
2nd Guanshan Road, Wuhan, China

Web: www.boster.com.cn **Phone:** +86 027-67845390 **Fax:** +86 027-67845390 **Email:** boster@boster.com.cn



Western blot analysis of HSD3B1 expression in Human placenta lysate.