

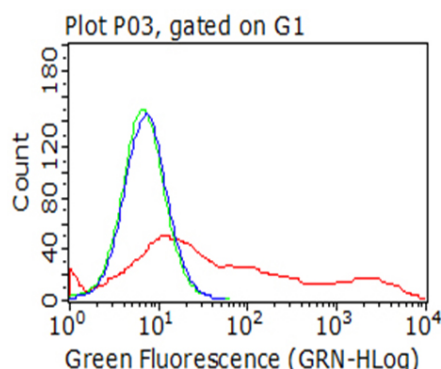
Basic Information

Product Name	Anti-CD10/MME Antibody (Clone#OTI3D11)
Gene Name	MME
Source	Mouse
Species Reactivity	human, mouse, rat
Tested Application	FCM, WB
Contents	PBS (PH 7.3) containing 1% BSA, 50% glycerol and 0.02% sodium azide.
Immunogen	Full length human recombinant protein of human MME (NP_009218) produced in HEK293T cell.
concentration	1 mg/ml
Purification	Purified from mouse ascites fluids or tissue culture supernatant by affinity chromatography (protein A/G)

Storage

Store at -20°C for one year. For short term storage and frequent use, store at 4°C for up to one month. Avoid repeated freeze-thaw cycles.

Selected Validation Data



Flow cytometric analysis of living 293T cells transfected with MME overexpression plasmid