

Basic Information

Product Name	Anti-Beta Tubulin/TUBB Antibody (Clone#2E11)
Gene Name	TUBB
Source	Mouse
Isotype	IgG2a
Species Reactivity	human,mouse,rat
Tested Application	WB, FCM, ICC/IF
Contents	500 ug/ml antibody with PBS , 0.02% Na ₃ N , 1 mg BSA and 50% glycerol.
Immunogen	A synthetic peptide corresponding to a sequence at the C-terminus of human Beta Tubulin (383-412aa EQFTAMFRRKAFLHWYTGEGMDEMEFTEAE), identical to the related mouse and rat sequences.
Purification	Immunogen affinity purified.
Observed MW	55KD
Dilution Ratios	Western blot (WB): 1:500-2000 Immunocytochemistry in fixed cells:1:50-400 Flow cytometry (FCM): 1-3 µg/1x10 ⁶ cells

Storage

12 months from date of receipt, -20°C as supplied. 6 months 2 to 8°C after reconstitution. Avoid repeated freezing and thawing.

Background Information

Tubulin beta chain is a protein that in humans is encoded by the TUBB gene. This gene encodes a beta tubulin protein. This protein forms a dimer with alpha tubulin and acts as a structural component of microtubules. Mutations in this gene cause cortical dysplasia,complex,with other brain malformations 6. Alternative splicing results in multiple splice variants. There are multiple pseudogenes for this gene on chromosomes 1,6,7,8,9,and 13.

Reference

Anti-Beta Tubulin/TUBB Antibody (Clone#2E11)被引用在1文献中。

Selected Validation Data

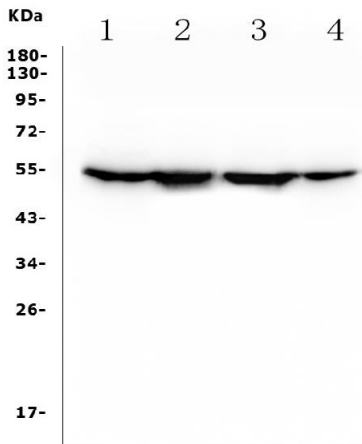


Figure 1. Western blot analysis of anti- Tubulin beta antibody (M05613-4).The sample well of each lane was loaded with 50ug of sample under reducing conditions.Lane 1: human HEK293 tissue lysates,Lane 2: monkey COS-7 whole cell lysates,Lane 3: human PC-3 whole cell lysates,Lane 4: human Hela whole cell lysates,Use mouse anti- Tubulin beta 1:1000, probed with a goat anti-mouse IgG-HRP secondary antibody. The signal is developed using an Enhanced Chemiluminescent detection (ECL) kit (Catalog # EK1002). A specific band was detected for Tubulin beta at approximately 55KD. The expected band size for Tubulin beta is at 55KD.

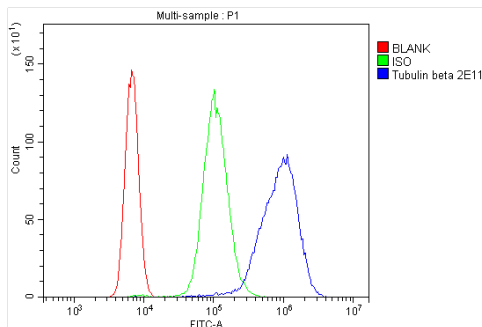


Figure 5.Flow cytometry analysis of U937 cell(1x10⁶) DyLight488 conjugated goat anti-mouse IgG(blue) was used as secondary antibody.Isotype control antibody (Green line) was mouse IgG DyLight488. Unlabelled sample (Red line).

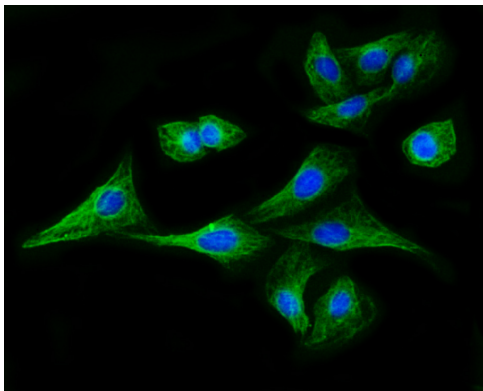


Figure 3. ICC analysis of anti- Tubulin beta antibody (M05613-4).was detected in immunocytochemical section of U2OS cells. Cells were stained using the Dylight488-conjugated Anti-mouse IgG Secondary Antibody (green)(Catalog#BA1127) and counterstained with DAPI (blue).