

Basic Information

Product Name	Anti-(Mouse) Claudin 6/CLDN6 Antibody (C-term)
Gene Name	Cldn6
Source	Rabbit
Isotype	IgG
Species Reactivity	mouse
Tested Application	WB, FCM
Contents	Purified polyclonal antibody supplied in PBS with 0.09% (W/V) sodium azide.
Immunogen	This Mouse Cldn6 antibody is generated from a rabbit immunized with a KLH conjugated synthetic peptide between 186-229 amino acids from the C-terminal region of mouse Cldn6.
Purification	This antibody is purified through a protein A column, followed by peptide affinity purification

Storage

Maintain refrigerated at 2-8°C for up to 2 weeks. For long term storage, store at -20°C in small aliquots to prevent freeze-thaw cycles.

Background Information

Plays a major role in tight junction-specific obliteration of the intercellular space, through calcium- independent cell-adhesion activity (By similarity).

Selected Validation Data

Product datasheet

Anti-(Mouse) Claudin 6/CLDN6

Antibody (C-term)

Catalog Number: **M08182-1**

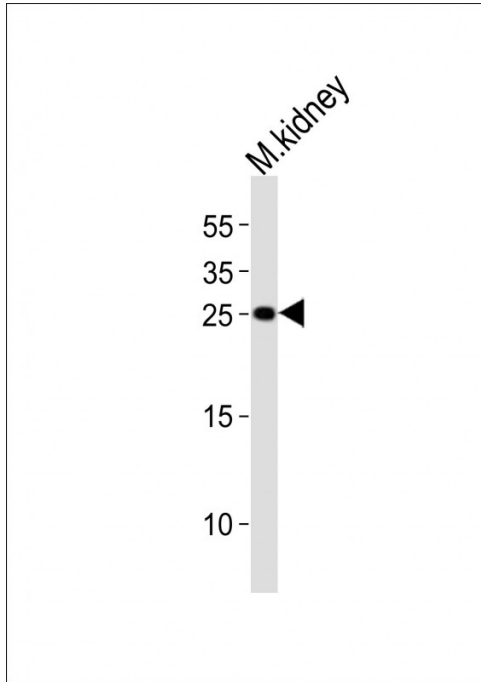
BOSTER

antibody and ELISA experts

BOSTER BIOLOGICAL TECHNOLOGY

Special NO.1, International Enterprise Center,
2nd Guanshan Road, Wuhan, China

Web: www.boster.com.cn Phone: +86 027-67845390 Fax: +86 027-67845390 Email: boster@boster.com.cn



Western blot analysis of lysate from mouse kidney tissue lysate, using Cldn6 Antibody (C-term). M08182-1 was diluted at 1:1000. A goat anti-rabbit IgG H&L (HRP) at 1:10000 dilution was used as the secondary antibody. Lysate at 20ug.