

## Basic Information

<b>Product Name</b>	Anti-His Tag Antibody
<b>Source</b>	Mouse
<b>Isotype</b>	IgG2b
<b>Species Reactivity</b>	All species
<b>Tested Application</b>	WB
<b>Contents</b>	500 ug/ml antibody with PBS , 0.02% NaN3 , 1mg BSA and 50% glycerol.
<b>Immunogen</b>	This antibody is produced by immunizing animals with a synthetic His tag peptide corresponding to KLH.
<b>concentration</b>	500ug/ml
<b>Purification</b>	protein G purified.
<b>Dilution Ratios</b>	Western blot:1:500-2000

## Storage

12 months from date of receipt, -20°C as supplied. 6 months 2 to 8°C after reconstitution. Avoid repeated freezing and thawing.

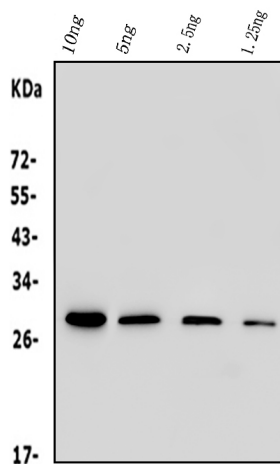
## Background Information

A Polyhistidine-Tag is an amino acids motif in proteins that consists of at least six histidine(His) residues, often at the N- or C-terminus of the protein. It is also known as hexa histidine-Tag, 6xHis-Tag, His6 Tag and by the trademarked name His-Tag. Polyhistidine-Tags are often used for affinity purification of genetically modified proteins.

## Reference

Anti-His Tag Antibody被引用在2文献中。

## Selected Validation Data



Western blot analysis of different concentration of Anti- His Tag (19b10) Monoclonal Antibody (M30975-1)Blocking: Incubate the membrane with 5% Non-Fat Milk, 1×PBS, 4°C, overnightAntibody Incubation: Diluted antibody in 5% Non-Fat Milk, 1×TBS, 0.1% Tween-20, RT, 30mins.