

Basic Information

Product Name	Anti-KEAP1 Antibody (Clone#OTI1G2)
Gene Name	KEAP1
Source	Mouse
Isotype	IgG1
Species Reactivity	human, mouse, rat
Tested Application	WB, IF, FCM
Contents	PBS (PH 7.3) containing 1% BSA, 50% glycerol and 0.02% sodium azide.
Immunogen	Full length human recombinant protein of human KEAP1 (NP_987096) produced in HEK293T cell.
concentration	500 ug/ml
Purification	Purified from mouse ascites fluids or tissue culture supernatant by affinity chromatography (protein A/G)
Observed MW	69.5KD
Dilution Ratios	Western blot (WB): 1:2000 Immunofluorescence (IF):1:100 Flow cytometry (FCM): 1:100

Storage

Stable for 12 months from date of receipt. Store at -20°C as received.

Background Information

This gene encodes a protein containing KELCH-1 like domains, as well as a BTB/POZ domain. Kelch-like ECH-associated protein 1 interacts with NF-E2-related factor 2 in a redox-sensitive manner and the dissociation of the proteins in the cytoplasm is followed by transportation of NF-E2-related factor 2 to the nucleus. This interaction results in the expression of the catalytic subunit of gamma-glutamylcysteine synthetase. Two alternatively spliced transcript variants encoding the same isoform have been found for this gene. [provided by RefSeq]

Selected Validation Data

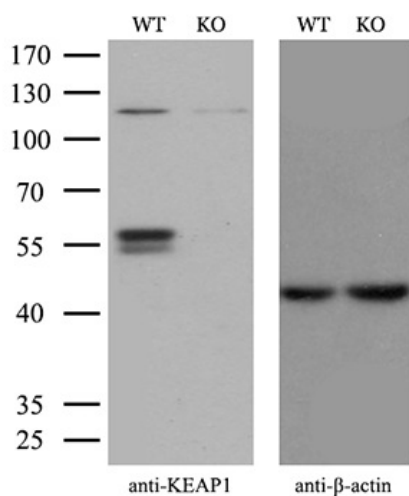


Figure 1. Equivalent amounts of cell lysates (10 ug per lane) of wild-type HeLa cells (WT) and KEAP1-Knockout HeLa cells (KO) were separated by SDS-PAGE and immunoblotted with anti-KEAP1 monoclonal antibody MA00514. Then the blotted membrane was stripped and reprobed with anti-β-actin antibody ([MA01263]) as a loading control (1:200).