

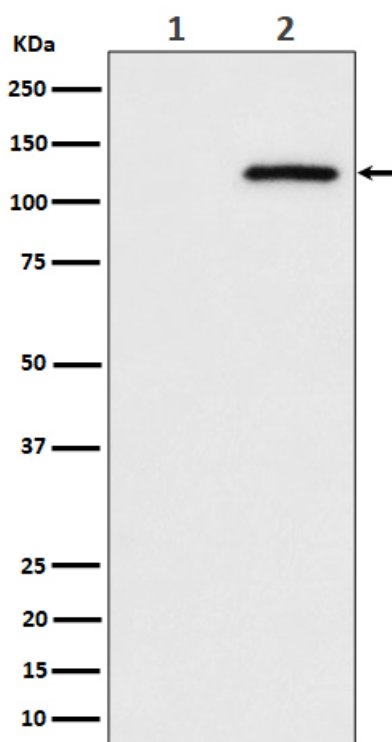
## Basic Information

<b>Product Name</b>	Anti-c-Cbl/CBL (Phospho-S669) Antibody
<b>Gene Name</b>	CBL
<b>Source</b>	Rabbit
<b>Isotype</b>	IgG
<b>Species Reactivity</b>	human, mouse, rat
<b>Tested Application</b>	WB
<b>Contents</b>	Rabbit IgG in phosphate buffered saline, pH 7.4, 150mM NaCl, 0.02% sodium azide and 50% glycerol, 0.5mg/ml BSA.
<b>Immunogen</b>	A synthesized peptide derived from human Phospho-CBL (S669)
<b>concentration</b>	500 ug/ml
<b>Purification</b>	Affinity-chromatography
<b>Observed MW</b>	120KD
<b>Dilution Ratios</b>	Western blot (WB):1:500-2000

## Storage

12 months from date of receipt, -20°C as supplied. 6 months 2 to 8°C after reconstitution. Avoid repeated freezing and thawing.

## Selected Validation Data



Western blot analysis of Phospho-CBL (S669) expression in (1) HeLa cell lysate; (2) HeLa cell treated with pervanadate lysate.