

## Basic Information

<b>Product Name</b>	Anti-c-Jun (Phospho-S73)+JunD (Phospho-S100) Antibody		
<b>Gene Name</b>	JUN/JUND		
<b>Source</b>	Rabbit		
<b>Isotype</b>	IgG		
<b>Species Reactivity</b>	human, mouse		
<b>Tested Application</b>	WB, IHC, IP		
<b>Contents</b>	Rabbit IgG in phosphate buffered saline, pH 7.4, 150mM NaCl, 0.02% sodium azide and 50% glycerol, 0.5mg/ml BSA.		
<b>Immunogen</b>	A synthesized peptide derived from human Phospho-c-Jun (S73)+JunD (S100)		
<b>concentration</b>	500 ug/ml		
<b>Purification</b>	Affinity-chromatography		
<b>Observed MW</b>	38,42,45KD		
<b>Dilution Ratios</b>	Western blot (WB):1:500-2000 IHC 1:50-1:200 IP 1:50		

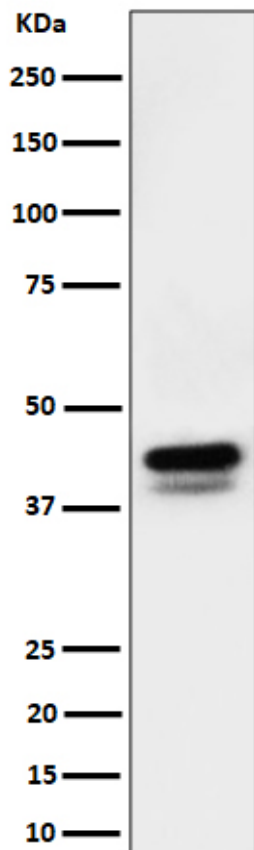
## Storage

12 months from date of receipt, -20°C as supplied. 6 months 2 to 8°C after reconstitution. Avoid repeated freezing and thawing.

## Selected Validation Data

**Anti-c-Jun (Phospho-S73)+JunD  
(Phospho-S100) Antibody**

**Catalog Number: P02038-2**



Western blot analysis of Phospho-c-Jun (S73)+JunD (S100)  
expression in RAW 264.7 cell lysate.