

Basic Information

Product Name	Anti-ALPL Antibody	
Gene Name	ALPL	
Source	Rabbit	
Isotype	IgG	
Species Reactivity	human,mouse,rat	
Tested Application	WB, IHC	
Contents	500 ug/ml antibody with PBS , 0.02% NaN ₃ , 1 mg BSA and 50% glycerol.	
Immunogen	A synthetic peptide corresponding to a sequence at the N-terminus of human Alkaline Phosphatase(21-35aa,EKEKDPKYWRDQAE), different from the related rat and mouse sequences by two amino acids.	
concentration	500 ug/ml	
Observed MW	57KD/80KD	
Dilution Ratios	Western blot (WB): 1:500-2000 Immunohistochemistry in paraffin section (IHC): 1:20-100 (Boiling the paraffin sections in 10mM citrate buffer,pH6.0,or PH8.0 EDTA repair liquid for 20 mins is required for the staining of formalin/paraffin sections.) Optimal working dilutions must be determined by end user.	

Storage

12 months from date of receipt, -20°C as supplied. 6 months 2 to 8°C after reconstitution. Avoid repeated freezing and thawing.

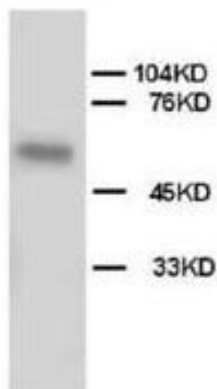
Background Information

Alkaline phosphatase(ALPL) removes phosphate groups from the 5' end of DNA and RNA, and from proteins, at high pH. Most mammals have 4 different isozymes: placental, placental like, intestinal and non tissue specific(found in liver, kidney and bone). Tissues with particularly high concentrations of ALP include the liver, bile ducts, placenta, and bone. ALPL is the alkaline phosphatase of skin fibroblasts ,the tissue-nonspecific type, and that it is active toward millimolar concentrations of the putative natural substrates phosphoethanolamine(PEA) and pyridoxal-5-prime-phosphate(PLP). ALPL gene exists in single copy in the haploid genome and is composed of 12 exons distributed over more than 50 kb.Damaged or diseased tissue releases enzymes into the blood, so serum ALP measurements can be abnormal in many conditions, including bone disease and liver disease.

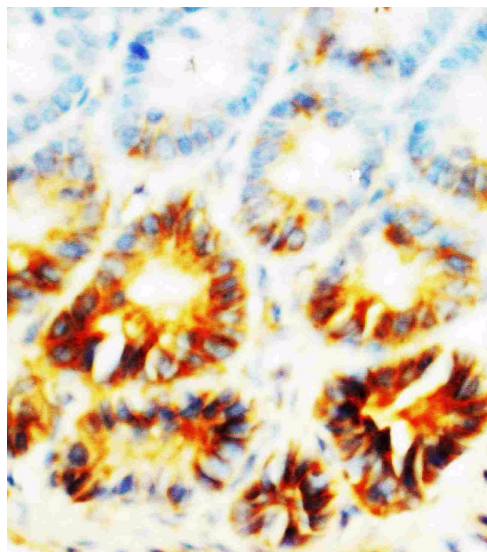
Reference

Anti-ALPL Antibody被引用在3文献中。

Selected Validation Data



Anti-Alkaline Phosphatase antibody, PA1004, Western blotting All lanes: Anti ALPL (PA1004) at 0.5ug/ml WB: HT1080 Whole Cell Lysate at 40ug Predicted bind size: 57KD Observed bind size: 57KD



Anti-Alkaline Phosphatase antibody, PA1004, IHC(P) IHC(P): Rat Small Intestine Tissue