

Basic Information

Product Name	Anti-GRIN1 Antibody	
Gene Name	GRIN1	
Source	Rabbit	
Isotype	IgG	
Species Reactivity	human, mouse, rat	
Tested Application	WB, IHC	
Contents	500 ug/ml antibody with PBS , 0.02% NaN ₃ , 1 mg BSA and 50% glycerol.	
Immunogen	A synthetic peptide corresponding to a sequence at the N-terminus of human NMDAR1(36-53aa RKHEQMFREAVNQANKRH), identical to the related rat and mouse sequences.	
concentration	500 ug/ml	
Purification	Immunogen affinity purified.	
Observed MW	110KD	
Dilution Ratios	Western blot(WB): 1:500-2000 Immunohistochemistry in paraffin section (IHC): 1:50-400 (Boiling the paraffin sections in 10mM citrate buffer,pH6.0,or PH8.0 EDTA repair liquid for 20 mins is required for the staining of formalin/paraffin sections.) Optimal working dilutions must be determined by end user.	

Storage

12 months from date of receipt, -20°C as supplied. 6 months 2 to 8°C after reconstitution. Avoid repeated freezing and thawing.

Background Information

Glutamate [NMDA] receptor subunit zeta-1 is a protein that in humans is encoded by the GRIN1 gene. The protein encoded by this gene is a critical subunit of N-methyl-D-aspartate receptors, members of the glutamate receptor channel superfamily which are heteromeric protein complexes with multiple subunits arranged to form a ligand-gated ion channel. These subunits play a key role in the plasticity of synapses, which is believed to underlie memory and learning. Cell-specific factors are thought to control expression of different isoforms, possibly contributing to the functional diversity of the subunits. Alternatively spliced transcript variants have been described.

Reference

Anti-GRIN1 Antibody被引用在2文献中。

Product datasheet

Anti-GRIN1 Antibody

Catalog Number: **PA1222**

BOSTER

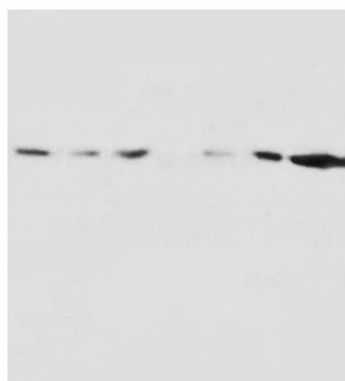
antibody and ELISA experts

BOSTER BIOLOGICAL TECHNOLOGY

Special NO.1, International Enterprise Center,
2nd Guanshan Road, Wuhan, China

Web: www.boster.com.cn **Phone:** +86 027-67845390 **Fax:** +86 027-67845390 **Email:** boster@boster.com.cn

Selected Validation Data



— 250KD
— 130KD
— 100KD
— 70KD
— 55KD
— 35KD

Lane 1: Rat Brain Tissue Lysate
Lane 2: Rat Brain Tissue Lysate
Lane 3: Rat Liver Tissue Lysate
Lane 4: Rat Heart Tissue Lysate
Lane 5: MM453 Cell Lysate
Lane 6: MM231 Cell Lysate
Lane 7: HELA Cell Lysate