

Basic Information

Product Name	Anti-Caspase 1/CASP1 (p20) Antibody	
Gene Name	CASP1	
Source	Rabbit	
Isotype	IgG	
Species Reactivity	human	
Tested Application	WB, IHC	
Contents	500 ug/ml antibody with PBS , 0.02% NaN3 , 1 mg BSA and 50% glycerol.	
Immunogen	A synthetic peptide corresponding to a sequence at the N-terminus of human CASP1(135-152aa CSLEEAQRIWKQKSAEIY).	
concentration	500 ug/ml	
Purification	Immunogen affinity purified.	
Observed MW	45KD	
Dilution Ratios	Western blot(WB): 1:500-2000 Immunohistochemistry(Paraffin-embedded Section): 1:50-400 (Boiling the paraffin sections in 10mM citrate buffer,pH6.0,or PH8.0 EDTA repair liquid for 20 mins is required for the staining of formalin/paraffin sections.) Optimal working dilutions must be determined by end user.	

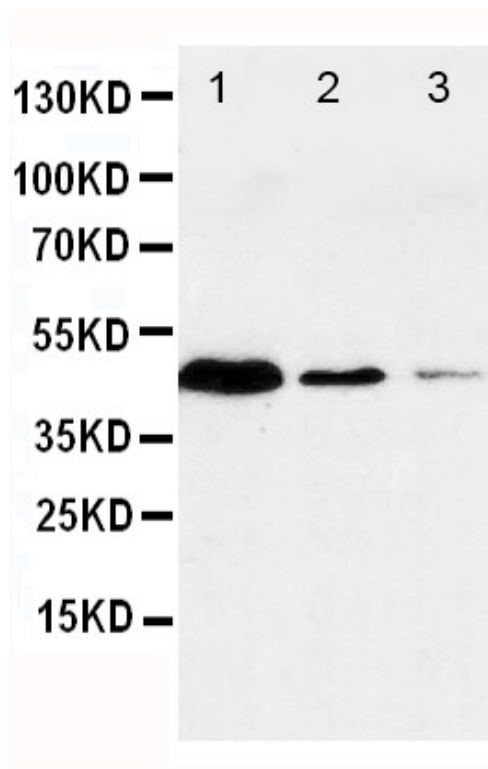
Storage

12 months from date of receipt, -20°C as supplied. 6 months 2 to 8°C after reconstitution. Avoid repeated freezing and thawing.

Background Information

Caspase 1 is a cysteine protease that regulates inflammatory processes through its capacity to process and activate the interleukin-1-beta, IL18, and IL33 precursor proteins. It belongs to a family of cysteine proteases known as caspases that always cleave proteins following an aspartic acid residue. The Caspase1 gene consists of 10 exons spanning at least 10.6 kb. The Caspase 1 gene is mapped to 11q23, a site frequently involved in rearrangement in human cancers, including a number of leukemias and lymphomas, by Southern DNA blot analysis of rodent-human hybrids and by in situ hybridization to normal human metaphase chromosomes. Caspase 1 has been shown to induce cell necrosis or pyroptosis and may function in various developmental stages.

Selected Validation Data



Lane 1: JURKAT Cell Lysate Lane 2: RAJI Cell Lysate Lane 3: CEM Cell Lysate