

Basic Information

Product Name	Anti-PLTP Antibody	
Gene Name	PLTP	
Source	Rabbit	
Isotype	IgG	
Species Reactivity	human	
Tested Application	WB, IHC	
Contents	500 ug/ml antibody with PBS , 0.02% NaN3 , 1 mg BSA and 50% glycerol.	
Immunogen	A synthetic peptide corresponding to a sequence in the middle region of human PLTP(256-271aa QLQEEERMVYVAFSEF).	
concentration	500 ug/ml	
Purification	Immunogen affinity purified.	
Observed MW	55KD	
Dilution Ratios	Western blot(WB): 1:500-2000 Immunohistochemistry(Paraffin-embedded Section): 1:50-400 (Boiling the paraffin sections in 10mM citrate buffer,pH6.0,or PH8.0 EDTA repair liquid for 20 mins is required for the staining of formalin/paraffin sections.) Optimal working dilutions must be determined by end user.	

Storage

12 months from date of receipt, -20°C as supplied. 6 months 2 to 8°C after reconstitution. Avoid repeated freezing and thawing.

Background Information

Phospholipid transfer protein(PLTP), also known as lipid transfer protein II is a protein that in humans is encoded by the PLTP gene. This gene is mapped to 20q13.12. The protein encoded by this gene is one of at least two lipid transfer proteins found in human plasma. The encoded protein transfers phospholipids from triglyceride-rich lipoproteins to high density lipoprotein(HDL). In addition to regulating the size of HDL particles, this protein may be involved in cholesterol metabolism. At least two transcript variants encoding different isoforms have been found for this gene.

Selected Validation Data

Product datasheet

Anti-PLTP Antibody

Catalog Number: **PA2228**

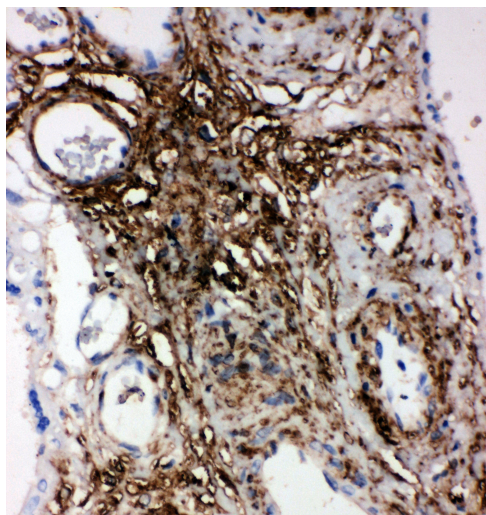
BOSTER

antibody and ELISA experts

BOSTER BIOLOGICAL TECHNOLOGY

Special NO.1, International Enterprise Center,
2nd Guanshan Road, Wuhan, China

Web: www.boster.com.cn **Phone:** +86 027-67845390 **Fax:** +86 027-67845390 **Email:** boster@boster.com.cn



IHC(P): Human Placenta Tissue