

Basic Information

Product Name	Anti-CCL1 Antibody
Gene Name	CCL1
Source	Rabbit
Isotype	IgG
Species Reactivity	human
Tested Application	WB, ELISA
Contents	500 ug/ml antibody with PBS , 0.02% Na ₂ S ₂ O ₃ , 1 mg BSA and 50% glycerol.
Immunogen	E.coli-derived human I-309 recombinant protein (Position: K24-K96). Human I-309 shares 38% amino acid (aa) sequence identity with mouse I-309.
concentration	500 ug/ml
Purification	Immunogen affinity purified.
Observed MW	11KD
Dilution Ratios	Western blot(WB):1:500-2000 ELISA: 1:100-1000

Storage

12 months from date of receipt, -20°C as supplied. 6 months 2 to 8°C after reconstitution. Avoid repeated freezing and thawing.

Background Information

CCL1, Chemokine (C-C motif) ligand 1, is one of several cytokine genes clustered on the q-arm of chromosome 17. Cytokines are a family of secreted proteins involved in immunoregulatory and inflammatory processes. The protein encoded by this gene is structurally related to the CXC subfamily of cytokines. Members of this subfamily are characterized by two cysteines separated by a single amino acid. This cytokine is secreted by activated T cells and displays chemotactic activity for monocytes but not for neutrophils. It binds to the chemokine receptor CCR8.

Reference

Anti-CCL1 Antibody 被引用在 1 文献中。

Selected Validation Data

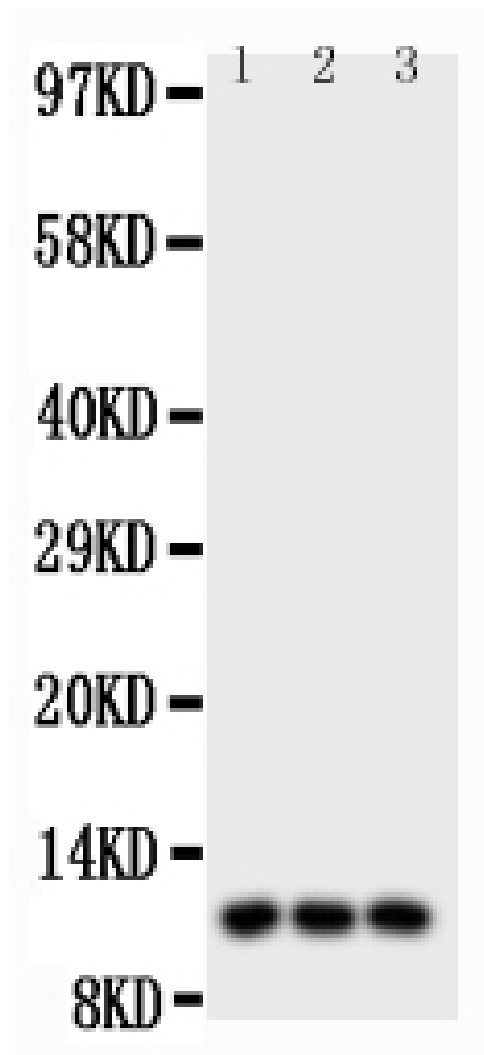


Figure 1. Western blot analysis of I-309 using anti-I-309 antibody (PB0052). Electrophoresis was performed on a 5-20% SDS-PAGE gel at 70V (Stacking gel) / 90V (Resolving gel) for 2-3 hours. The sample well of each lane was loaded with 50ug of sample under reducing conditions. Lane 1: U87 Whole Cell Lysate, Lane 2: MCF-7 Whole Cell Lysate, Lane 3: COLO320 Whole Cell Lysate. After Electrophoresis, proteins were transferred to a Nitrocellulose membrane at 150mA for 50-90 minutes. Blocked the membrane with 5% Non-fat Milk/ TBS for 1.5 hour at RT. The membrane was incubated with rabbit anti-I-309 antigen affinity purified polyclonal antibody (Catalog # PB0052) at 0.5 μ g/mL overnight at 4°C, then washed with TBS-0.1%Tween 3 times with 5 minutes each and probed with a goat anti-rabbit IgG-HRP secondary antibody at a dilution of 1:10000 for 1.5 hour at RT. The signal is developed using an Enhanced Chemiluminescent detection (ECL) kit (Catalog # EK1002) with Tanon 5200 system. A specific band was detected for I-309 at approximately 11KD. The expected band size for I-309 is at 11KD.