

Basic Information

Product Name	Anti-IL2 Antibody
Gene Name	IL2
Source	Rabbit
Isotype	IgG
Species Reactivity	rat
Tested Application	WB
Contents	500 ug/ml antibody with PBS , 0.02% Na ₂ S ₂ O ₃ , 1 mg BSA and 50% glycerol.
Immunogen	E.coli-derived rat IL-2 recombinant protein (Position: A21-Q155). Rat IL-2 shares 66% and 80% amino acid (aa) sequence identity with human and mouse IL-2, respectively.
concentration	500 ug/ml
Purification	Immunogen affinity purified.
Observed MW	18KD
Dilution Ratios	Western blot(WB):1:500-2000

Storage

12 months from date of receipt, -20°C as supplied. 6 months 2 to 8°C after reconstitution. Avoid repeated freezing and thawing.

Background Information

Interleukin-2 (IL2), formerly referred to as T-cell growth factor, is a powerfully immunoregulatory lymphokine that is produced by lectin- or antigen-activated T cells. It is produced not only by mature T lymphocytes on stimulation but also constitutively by certain T-cell lymphoma cell lines. The lymphokine interleukin-2 (IL-2) is responsible for autocrine cell cycle progression and regulation of immune responses. IL-2 expression in mature thymocytes and T cells has been found to be tightly controlled by monoallelic expression. IL-2 can act as a growth hormone for both B and T lymphocytes. This gene for interleukin 2 (IL2) is assigned to chromosome 4. IL-2 is a 15.5KDa glycoprotein, consisting of 153 amino acids in precursor form and 133 amino acids in mature form.

Selected Validation Data

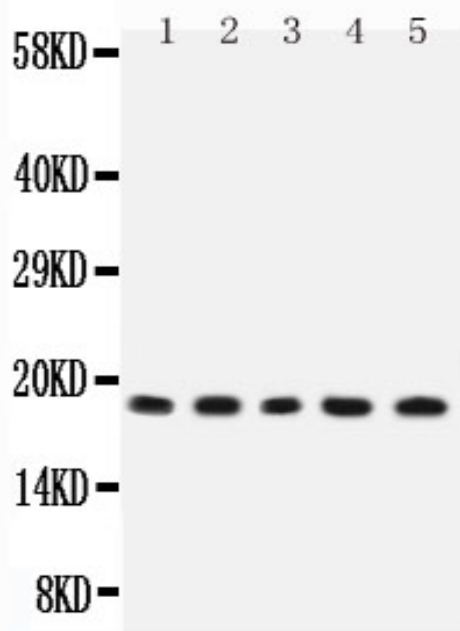


Figure 1. Western blot analysis of IL2 using anti-IL2 antibody (PB0059). Electrophoresis was performed on a 5-20% SDS-PAGE gel at 70V (Stacking gel) / 90V (Resolving gel) for 2-3 hours. The sample well of each lane was loaded with 50ug of sample under reducing conditions. Lane 1: Rat Thymus Tissue Lysate, Lane 2: Rat Liver Tissue Lysate, Lane 3: NRK Whole Cell Lysate, Lane 4: PC12 Whole Cell Lysate, Lane 5: RH35 Whole Cell Lysate. After Electrophoresis, proteins were transferred to a Nitrocellulose membrane at 150mA for 50-90 minutes. Blocked the membrane with 5% Non-fat Milk/ TBS for 1.5 hour at RT. The membrane was incubated with rabbit anti-IL2 antigen affinity purified polyclonal antibody (Catalog # PB0059) at 0.5 μ g/mL overnight at 4°C, then washed with TBS-0.1%Tween 3 times with 5 minutes each and probed with a goat anti-rabbit IgG-HRP secondary antibody at a dilution of 1:10000 for 1.5 hour at RT. The signal is developed using an Enhanced Chemiluminescent detection (ECL) kit (Catalog # EK1002) with Tanon 5200 system. A specific band was detected for IL2 at approximately 18KD. The expected band size for IL2 is at 18KD.