

Basic Information

Product Name	Anti-IL6 Antibody
Gene Name	IL6
Source	Rabbit
Isotype	IgG
Species Reactivity	mouse
Tested Application	WB, ELISA
Contents	500 ug/ml antibody with PBS , 0.02% NaN3 , 1 mg BSA and 50% glycerol.
Immunogen	E.coli-derived mouse IL-6 recombinant protein (Position: F25-T211). Mouse IL-6 shares 40% and 85% amino acid (aa) sequences identity with human and rat IL-6, respectively.
concentration	500 ug/ml
Purification	Immunogen affinity purified.
Observed MW	24KD
Dilution Ratios	Western blot(WB):1:500-2000 ELISA: 1:100-1000

Storage

12 months from date of receipt, -20°C as supplied. 6 months 2 to 8°C after reconstitution. Avoid repeated freezing and thawing.

Background Information

Interleukin-6 (IL-6) is a protein that in humans is encoded by the IL6 gene. IL-6 is an interleukin that acts as both a pro-inflammatory and anti-inflammatory cytokine. It is secreted by T cells and macrophages to stimulate immune response to trauma, especially burns or other tissue damage leading to inflammation. IL-6 is one of the most important mediators of fever and of the acute phase response. IL-6 is also essential for hybridoma growth and is found in many supplemental cloning media such as briclone. Bowcock et al. (1988) assigned the IL6 gene to chromosome 7p21. By in situ hybridization and Southern blot analysis of mouse-human hybrid cell lines, Sutherland et al. (1988) mapped the IL-6 gene to chromosome 7p15.

Reference

Anti-IL6 Antibody被引用在4文献中。

Selected Validation Data

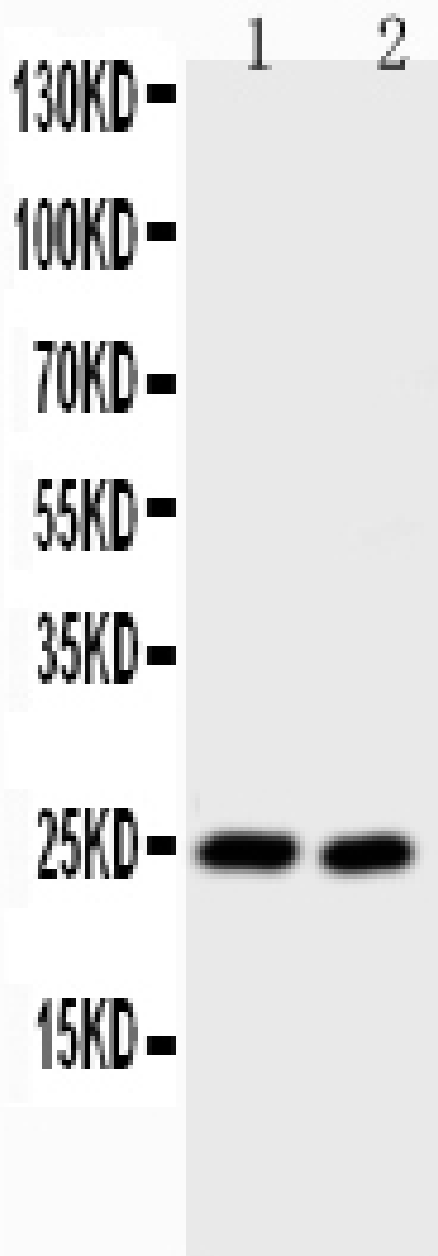


Figure 1. Western blot analysis of IL6 using anti-IL6 antibody (PB0060). Electrophoresis was performed on a 5-20% SDS-PAGE gel at 70V (Stacking gel) / 90V (Resolving gel) for 2-3 hours. The sample well of each lane was loaded with 50ug of sample under reducing conditions. Lane 1: HEPA Whole Cell Lysate, Lane 2: NIH Whole Cell Lysate. After Electrophoresis, proteins were transferred to a Nitrocellulose membrane at 150mA for 50-90 minutes. Blocked the membrane with 5% Non-fat Milk/ TBS for 1.5 hour at RT. The membrane was incubated with rabbit anti-IL6 antigen affinity purified polyclonal antibody (Catalog # PB0060) at 0.5 μ g/mL overnight at 4°C, then washed with TBS-0.1%Tween 3 times with 5 minutes each and probed with a goat anti-rabbit IgG-HRP secondary antibody at a dilution of 1:10000 for 1.5 hour at RT. The signal is developed using an Enhanced Chemiluminescent detection (ECL) kit (Catalog # EK1002) with Tanon 5200 system. A specific band was detected for IL6 at approximately 24KD. The expected band size for IL6 is at 24KD.