

Basic Information

Product Name	Anti-IGFBP1 Antibody
Gene Name	IGFBP1
Source	Rabbit
Isotype	IgG
Species Reactivity	mouse, rat
Tested Application	WB, ELISA
Contents	500 ug/ml antibody with PBS , 0.02% NaN ₃ , 1 mg BSA and 50% glycerol.
Immunogen	A synthetic peptide corresponding to a sequence at the C-terminus of mouse IGFBP-1 (177-207aa REIADLKKWKEPCQRELYKVLRLAAAQQKA), different from the related human sequence by eleven amino acids, and from the related rat sequence by one amino acid.
concentration	500 ug/ml
Purification	Immunogen affinity purified.
Observed MW	30KD
Dilution Ratios	Western blot(WB):1:500-2000 ELISA: 1:100-1000

Storage

12 months from date of receipt, -20°C as supplied. 6 months 2 to 8°C after reconstitution. Avoid repeated freezing and thawing.

Background Information

IGFBP1, Insulin-like growth factor-binding protein 1, also known as placental protein 12 (PP12), is a protein that in humans is encoded by the IGFBP1 gene. The IGFBP1 gene has 4 exons and spans 5.9 kb. And the IGFBP1 gene is localized to 7p13-p12 by in situ hybridization. This gene is a member of the Insulin-like growth factor-binding protein (IGFBP) family and encodes a protein with an IGFBP domain and a type-I thyroglobulin domain. The protein binds both insulin-like growth factors (IGFs) I and II and circulates in the plasma. Binding of this protein prolongs the half-life of the IGFs and alters their interaction with cell surface receptors. Alternate transcriptional splice variants, encoding different isoforms, have been characterized.

Selected Validation Data

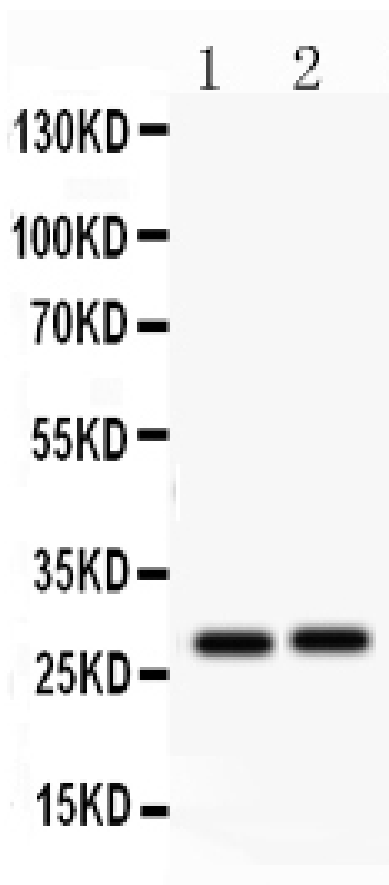


Figure 1. Western blot analysis of IGFBP1 using anti-IGFBP1 antibody (PB0635). Electrophoresis was performed on a 5-20% SDS-PAGE gel at 70V (Stacking gel) / 90V (Resolving gel) for 2-3 hours. The sample well of each lane was loaded with 50ug of sample under reducing conditions. Lane 1: Rat Kidney Tissue Lysate, Lane 2: Mouse Kidney Tissue Lysate. After Electrophoresis, proteins were transferred to a Nitrocellulose membrane at 150mA for 50-90 minutes. Blocked the membrane with 5% Non-fat Milk/ TBS for 1.5 hour at RT. The membrane was incubated with rabbit anti-IGFBP1 antigen affinity purified polyclonal antibody (Catalog # PB0635) at 0.5 μ g/mL overnight at 4°C, then washed with TBS-0.1%Tween 3 times with 5 minutes each and probed with a goat anti-rabbit IgG-HRP secondary antibody at a dilution of 1:10000 for 1.5 hour at RT. The signal is developed using an Enhanced Chemiluminescent detection (ECL) kit (Catalog # EK1002) with Tanon 5200 system. A specific band was detected for IGFBP1 at approximately 28KD. The expected band size for IGFBP1 is at 28KD.