

Basic Information

Product Name	Anti-CD138/Syndecan-1/SDC1 Antibody	
Gene Name	SDC1	
Source	Rabbit	
Isotype	IgG	
Species Reactivity	human, rat	
Tested Application	WB, ICC/IF, FCM	
Contents	500 ug/ml antibody with PBS , 0.02% NaN ₃ , 1 mg BSA and 50% glycerol.	
Immunogen	A synthetic peptide corresponding to a sequence at the C-terminus of human Syndecan-1 (218-251aa ENTAVVAVEPDRRNQSPVDQGATGASQGLDRKE), different from the related mouse sequence by six amino acids, and from the related rat sequence by four amino acids.	
concentration	500 ug/ml	
Purification	Immunogen affinity purified.	
Observed MW	32KD	
Dilution Ratios	Western blot(WB):	1:500-2000
	Immunocytochemistry/Immunofluorescence (ICC/IF):	1:50-400
	Flow cytometry (FCM):	1-3 µg/1x10 ⁶ cells

Storage

12 months from date of receipt, -20°C as supplied. 6 months 2 to 8°C after reconstitution. Avoid repeated freezing and thawing.

Background Information

Syndecan 1 is a protein which in humans is encoded by the SDC1 gene. The protein encoded by this gene is a transmembrane (type I) heparan sulfate proteoglycan and is a member of the syndecan proteoglycan family. The syndecans mediate cell binding, cell signaling, and cytoskeletal organization and syndecan receptors are required for internalization of the HIV-1 tat protein. The syndecan-1 protein functions as an integral membrane protein and participates in cell proliferation, cell migration and cell-matrix interactions via its receptor for extracellular matrix proteins. Altered syndecan-1 expression has been detected in several different tumor types. While several transcript variants may exist for this gene, the full-length nature of only two have been described to date. These two represent the major variants of this gene and encode the same protein.

Selected Validation Data

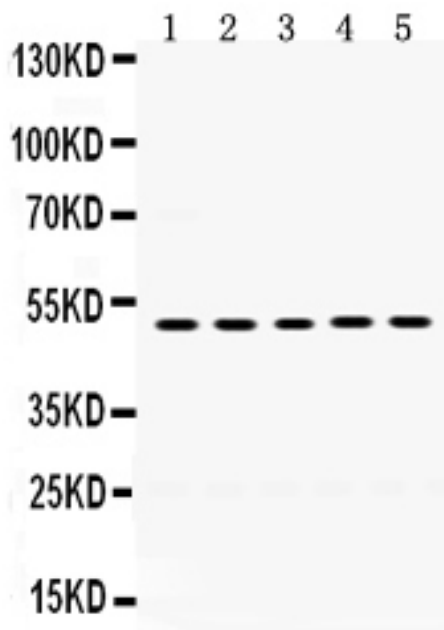


Figure 1. Western blot analysis of Syndecan-1 using anti-Syndecan-1 antibody (PB0791). Electrophoresis was performed on a 5-20% SDS-PAGE gel at 70V (Stacking gel) / 90V (Resolving gel) for 2-3 hours. The sample well of each lane was loaded with 50ug of sample under reducing conditions. Lane 1: HT1080 Whole Cell Lysate, Lane 2: MCF-7 Whole Cell Lysate, Lane 3: 293T Whole Cell Lysate, Lane 4: HEPG2 Whole Cell Lysate, Lane 5: HELA Whole Cell Lysate. After Electrophoresis, proteins were transferred to a Nitrocellulose membrane at 150mA for 50-90 minutes. Blocked the membrane with 5% Non-fat Milk/ TBS for 1.5 hour at RT. The membrane was incubated with rabbit anti-Syndecan-1 antigen affinity purified polyclonal antibody (Catalog # PB0791) at 0.5 µg/mL overnight at 4°C, then washed with TBS-0.1%Tween 3 times with 5 minutes each and probed with a goat anti-rabbit IgG-HRP secondary antibody at a dilution of 1:10000 for 1.5 hour at RT. The signal is developed using an Enhanced Chemiluminescent detection (ECL) kit (Catalog # EK1002) with Tanon 5200 system. A specific band was detected for Syndecan-1 at approximately 50KD. The expected band size for Syndecan-1 is at 32KD.

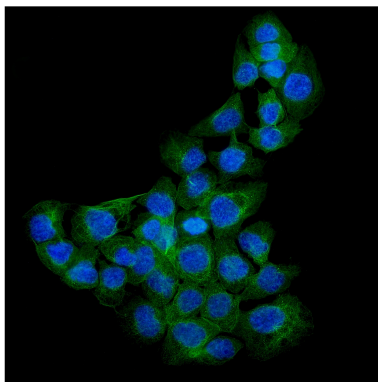


Figure 2. ICC analysis using anti-Syndecan-1 antibody (PB0791) was detected in immersion fixed A431 cell line. Cells were stained using the Dylight488-conjugated Anti-rabbit IgG Secondary Antibody (green) (Catalog # BA1127) and counterstained with DAPI (blue).

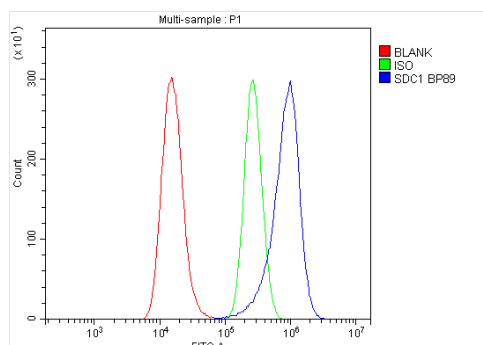


Figure 3. Flow cytometry analysis of A549 cell (1x10⁶) DyLight 488 conjugated goat anti-rabbit IgG (blue) was used as secondary antibody. Isotype control antibody (Green line) was rabbit IgG DyLight 488. Unlabelled sample (Red line).

Product datasheet

Anti-CD138/Syndecan-1/SDC1

Antibody

Catalog Number: PB0791

BOSTER

antibody and ELISA experts

BOSTER BIOLOGICAL TECHNOLOGY

Special NO.1, International Enterprise Center,
2nd Guanshan Road, Wuhan, China

Web: www.boster.com.cn **Phone:** +86 027-67845390 **Fax:** +86 027-67845390 **Email:** boster@boster.com.cn