

Basic Information

Product Name	Anti-Collagen Type I/COL1A1 Antibody	
Gene Name	COL1A1	
Source	Rabbit	
Isotype	IgG	
Species Reactivity	human	
Tested Application	WB, IHC	
Contents	500 ug/ml antibody with PBS , 0.02% NaN ₃ , 1 mg BSA and 50% glycerol.	
Immunogen	A synthetic peptide corresponding to a sequence at the C-terminus of human Collagen I (1194-1218aa AGFDFSFLPQPPQEKAHDGGYYRA), different from the related mouse and rat sequences by four amino acids.	
concentration	500 ug/ml	
Purification	Immunogen affinity purified.	
Observed MW	180-200KD	
Dilution Ratios	Western blot(WB): 1:500-2000 Immunohistochemistry in paraffin section (IHC): 1:50-400 (Boiling the paraffin sections in 10mM citrate buffer,pH6.0,or PH8.0 EDTA repair liquid for 20 mins is required for the staining of formalin/paraffin sections.) Optimal working dilutions must be determined by end user.	

Storage

12 months from date of receipt, -20°C as supplied. 6 months 2 to 8°C after reconstitution. Avoid repeated freezing and thawing.

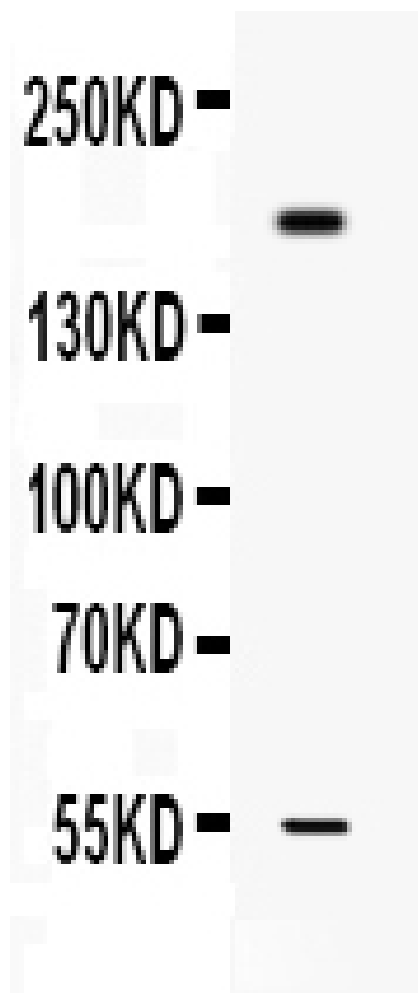
Background Information

Collagen, type I, alpha 1, also known as COL1A1, is a human gene that encodes the major component of type I collagen, the fibrillar collagen found in most connective tissues, including cartilage. This gene is mapped to 17q21.33. And this gene encodes the pro-alpha1 chains of type I collagen whose triple helix comprises two alpha1 chains and one alpha2 chain. Type I is a fibril-forming collagen found in most connective tissues and is abundant in bone, cornea, dermis and tendon. Mutations in this gene are associated with osteogenesis imperfecta types I-IV, Ehlers-Danlos syndrome type VIIA, Ehlers-Danlos syndrome Classical type, Caffey Disease and idiopathic osteoporosis.

Reference

Anti-Collagen Type I/COL1A1 Antibody 被引用在1文献中。

Selected Validation Data



Western blot analysis of Collagen I expression in MCF-7 whole cell lysates (lane 1). Collagen I at 180KD;55KD was detected using rabbit anti- Collagen I Antigen Affinity purified polyclonal antibody (Catalog # PB0980) at 0.5 µg/mL. The blot was developed using chemiluminescence (ECL) method (Catalog # EK1002).