

Basic Information

Product Name	Anti-SIRT6 Antibody	
Gene Name	SIRT6	
Source	Rabbit	
Isotype	IgG	
Species Reactivity	human, mouse	
Tested Application	WB, IHC	
Contents	500 ug/ml antibody with PBS , 0.02% NaN3 , 1 mg BSA and 50% glycerol.	
Immunogen	E.coli-derived human SIRT6 recombinant protein (Position: D14-E180). Human SIRT6 shares 95% amino acid (aa) sequence identity with mouse SIRT6.	
concentration	500 ug/ml	
Purification	Immunogen affinity purified.	
Observed MW	39KD	
Dilution Ratios	Western blot(WB): 1:500-2000 Immunohistochemistry in paraffin section (IHC): 1:50-400 (Boiling the paraffin sections in 10mM citrate buffer,pH6.0,or PH8.0 EDTA repair liquid for 20 mins is required for the staining of formalin/paraffin sections.) Optimal working dilutions must be determined by end user.	

Storage

12 months from date of receipt, -20°C as supplied. 6 months 2 to 8°C after reconstitution. Avoid repeated freezing and thawing.

Background Information

SIRT6 is also known as SIR2L6. This gene encodes a member of the sirtuin family of proteins, homologs to the yeast Sir2 protein. Members of the sirtuin family are characterized by a sirtuin core domain and grouped into four classes. The functions of human sirtuins have not yet been determined; however, yeast sirtuin proteins are known to regulate epigenetic gene silencing and suppress recombination of rDNA. Studies suggest that the human sirtuins may function as intracellular regulatory proteins with mono-ADP-ribosyltransferase activity. The protein encoded by this gene is included in class IV of the sirtuin family. Alternative splicing results in multiple transcript variants.

Reference

Anti-SIRT6 Antibody被引用在1文献中。

Selected Validation Data

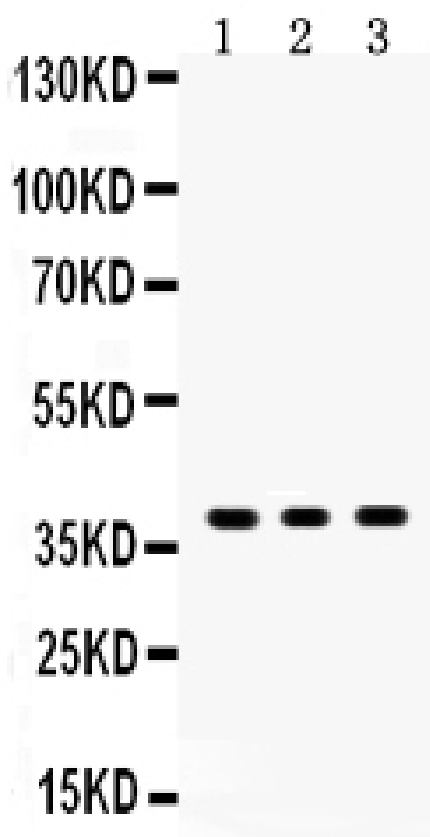


Figure 1. Western blot analysis of SIRT6 using anti-SIRT6 antibody (PB9357). Electrophoresis was performed on a 5-20% SDS-PAGE gel at 70V (Stacking gel) / 90V (Resolving gel) for 2-3 hours. The sample well of each lane was loaded with 50ug of sample under reducing conditions. Lane 1: HELA Whole Cell Lysate, Lane 2: A549 Whole Cell Lysate, Lane 3: Human Placenta Tissue Lysate. After Electrophoresis, proteins were transferred to a Nitrocellulose membrane at 150mA for 50-90 minutes. Blocked the membrane with 5% Non-fat Milk/ TBS for 1.5 hour at RT. The membrane was incubated with rabbit anti-SIRT6 antigen affinity purified polyclonal antibody (Catalog # PB9357) at 0.5 µg/mL overnight at 4°C, then washed with TBS-0.1%Tween 3 times with 5 minutes each and probed with a goat anti-rabbit IgG-HRP secondary antibody at a dilution of 1:10000 for 1.5 hour at RT. The signal is developed using an Enhanced Chemiluminescent detection (ECL) kit (Catalog # EK1002) with Tanon 5200 system. A specific band was detected for SIRT6 at approximately 39KD. The expected band size for SIRT6 is at 39KD.

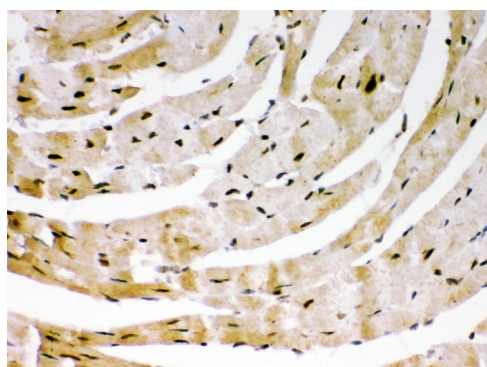


Figure 2. IHC analysis of SIRT6 using anti-SIRT6 antibody (PB9357). SIRT6 was detected in paraffin-embedded section of Mouse Cardiac Muscle Tissue. Heat mediated antigen retrieval was performed in citrate buffer (pH6, epitope retrieval solution) for 20 mins. The tissue section was blocked with 10% goat serum. The tissue section was then incubated with 1µg/ml rabbit anti-SIRT6 Antibody (PB9357) overnight at 4°C. Biotinylated goat anti-rabbit IgG was used as secondary antibody and incubated for 30 minutes at 37°C. The tissue section was developed using Streptavidin-Biotin-Complex (SABC)(Catalog # SA1022) with DAB as the chromogen.