

Basic Information

| | | |
|--------------------|--|--|
| Product Name | Anti-BMP2 Antibody | |
| Gene Name | BMP2 | |
| Source | Rabbit | |
| Isotype | IgG | |
| Species Reactivity | human, rat | |
| Tested Application | WB, IHC, ELISA | |
| Contents | 500 ug/ml antibody with PBS , 0.02% Na ₃ N , 1 mg BSA and 50% glycerol. | |
| Immunogen | A synthetic peptide corresponding to a sequence at the C-terminus of human BMP-2 (283-312aa QAKHKQRKRLKSSCKRHPLYVDFSDVGWND), identical to the related mouse and rat sequences. | |
| concentration | 500 ug/ml | |
| Purification | Immunogen affinity purified. | |
| Observed MW | 20KD,40KD | |
| Dilution Ratios | Western blot(WB): 1:500-2000 Immunohistochemistry(Paraffin-embedded Section): 1:50-400 ELISA: 1:100-1000 (Boiling the paraffin sections in 10mM citrate buffer,pH6.0,or PH8.0 EDTA repair liquid for 20 mins is required for the staining of formalin/paraffin sections.) Optimal working dilutions must be determined by end user. | |

Storage

12 months from date of receipt, -20°C as supplied. 6 months 2 to 8°C after reconstitution. Avoid repeated freezing and thawing.

Background Information

BMP2 is also known as Bone morphogenetic protein 2 or BMP2A. It is mapped to 20p12. The protein encoded by this gene belongs to the transforming growth factor-beta (TGFB) superfamily. BMP-2, like other bone morphogenetic proteins, plays an important role in the development of bone and cartilage. It is involved in the hedgehog pathway, TGF beta signaling pathway, and in cytokine-cytokine receptor interaction. Also, it is involved in cardiac cell differentiation and epithelial to mesenchymal transition. In addition, BMP2A has been suggested as a reasonable candidate for the human condition fibrodysplasia (myositis) ossificans progressiva, on the basis of observations in a Drosophila model.

Reference

Anti-BMP2 Antibody被引用在2文献中。

Selected Validation Data

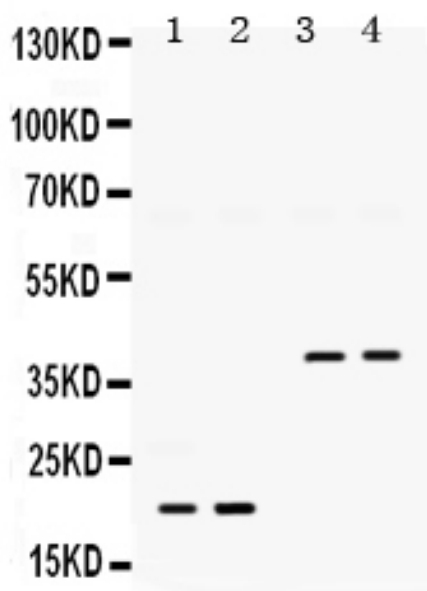


Figure 1. Western blot analysis of Anti-BMP2 antibody (PB9687). The sample well of each lane was loaded with 50ug of sample under reducing conditions. Lane 1: Rat lung tissue lysates, Lane 2: Rat brain tissue lysates, Lane 3: U87 whole cell lysates, Lane 4: HELA whole cell lysates, Use rabbit Anti-BMP2 1:1000, probed with a goat Anti-rabbit IgG-HRP secondary antibody. The signal is developed using an Enhanced Chemiluminescent detection (ECL) kit (Catalog # EK1002). A specific band was detected for BMP2 at approximately 20/40KD. The expected band size for BMP2 is at 45KD.

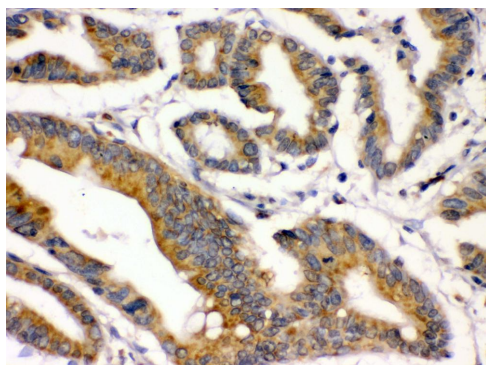


Figure 2. IHC analysis using Anti-BMP2 antibody (PB9687) detected in paraffin-embedded section of human intestinal cancer tissue. Biotinylated goat Anti-rabbit IgG was used as secondary antibody. The tissue section was developed using Streptavidin-Biotin-Complex (SABC) (Catalog # SA1022) with DAB as the chromogen.