

## Basic Information

Product Name	Anti-Ceruloplasmin/CP Antibody	
Gene Name	CP	
Source	Rabbit	
Isotype	IgG	
Species Reactivity	human	
Tested Application	WB, IHC	
Contents	500 ug/ml antibody with PBS , 0.02% NaN3 , 1 mg BSA and 50% glycerol.	
Immunogen	E. coli-derived human Ceruloplasmin recombinant protein (Position: K20-M259). Human Ceruloplasmin shares 80.8% and 79.6% amino acid (aa) sequence identity with mouse and rat Ceruloplasmin, respectively.	
concentration	500 ug/ml	
Purification	Immunogen affinity purified.	
Observed MW	122KD	
Dilution Ratios	Western blot(WB): 1:500-2000 Immunohistochemistry(Paraffin-embedded Section): 1:50-400 (Boiling the paraffin sections in 10mM citrate buffer,pH6.0,or PH8.0 EDTA repair liquid for 20 mins is required for the staining of formalin/paraffin sections.) Optimal working dilutions must be determined by end user.	

## Storage

12 months from date of receipt, -20°C as supplied. 6 months 2 to 8°C after reconstitution. Avoid repeated freezing and thawing.

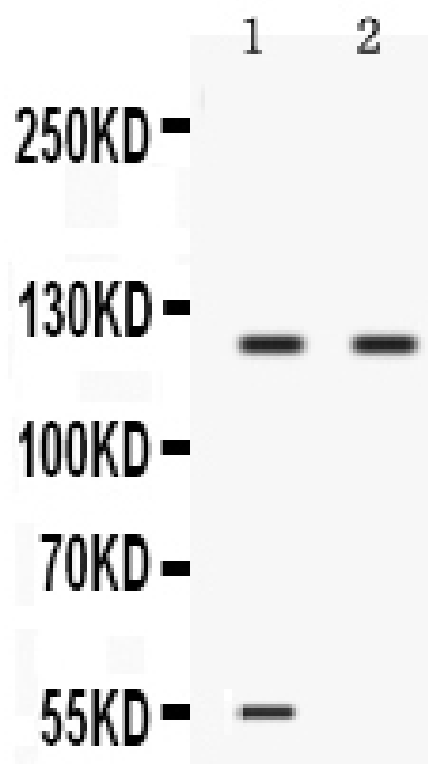
## Background Information

Ceruloplasmin (or<sup>o</sup>Caeruloplasmin) is a ferroxidase enzyme that in humans is encoded by the<sup>o</sup>CP gene. It is mapped to 3q23-q25. The protein encoded by this gene is a metalloprotein that binds most of the copper in plasma and is involved in the peroxidation of Fe(II)transferrin to Fe(III) transferrin. Mutations in this gene cause aceruloplasminemia, which results in iron accumulation and tissue damage, and is associated with diabetes and neurologic abnormalities. Two transcript variants, one protein-coding and the other not protein-coding, have been found for this gene.

## Reference

Anti-Ceruloplasmin/CP Antibody 被引用在2文献中。

## Selected Validation Data



Western blot analysis of Ceruloplasmin expression in 22RV1 whole cell lysates (lane 1) and A549 whole cell lysates (lane 2).

Ceruloplasmin at 122KD was detected using rabbit anti-Ceruloplasmin Antigen Affinity purified polyclonal antibody at 0.5  $\mu$ g/mL. The blot was developed using chemiluminescence (ECL) method (Catalog # EK1002).