

Basic Information

Product Name	Anti-Cathepsin K/CTSK Antibody	
Gene Name	CTSK	
Source	Rabbit	
Isotype	IgG	
Species Reactivity	human, mouse, rat	
Tested Application	WB, IHC	
Contents	500 ug/ml antibody with PBS , 0.02% NaN3 , 1 mg BSA and 50% glycerol.	
Immunogen	E. coli-derived human Cathepsin K recombinant protein (Position: A115-M329). Human Cathepsin K shares 86.9% and 88.8% amino acid (aa) sequence identity with mouse and rat Cathepsin K, respectively.	
concentration	500 ug/ml	
Purification	Immunogen affinity purified.	
Observed MW	45KD	
Dilution Ratios	Western blot(WB): 1:500-2000 Immunohistochemistry(Paraffin-embedded Section): 1:50-400 (Boiling the paraffin sections in 10mM citrate buffer,pH6.0,or PH8.0 EDTA repair liquid for 20 mins is required for the staining of formalin/paraffin sections.) Optimal working dilutions must be determined by end user.	

Storage

12 months from date of receipt, -20°C as supplied. 6 months 2 to 8°C after reconstitution. Avoid repeated freezing and thawing.

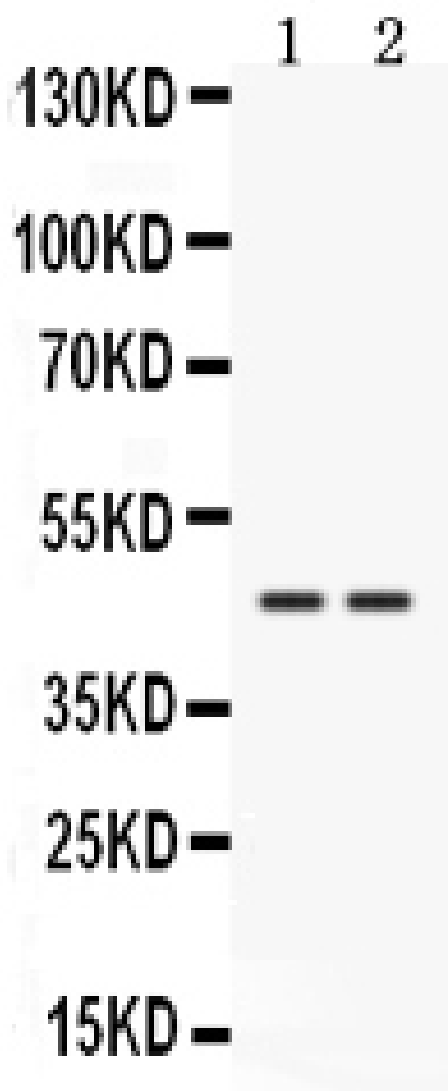
Background Information

Cathepsin K, abbreviated°CTSK, is an enzyme that in humans is encoded by the°CTSK gene. It is mapped to 1q21. The protein encoded by this gene is a lysosomal°Cysteine protease involved in bone remodeling and resorption. And this protein, which is a member of the peptidase C1 protein family, is expressed predominantly in osteoclasts. Additionally, the enzyme's ability to catabolize elastin,°Collagen, and gelatin allow it to break down bone and cartilage. This catabolic activity is also partially responsible for the loss of lung elasticity and recoil in emphysema. Cathepsin K inhibitors, such as odanacatib, show great potential in the treatment of osteoporosis. Cathepsin K is degraded by Cathepsin S, called Controlled Cathepsin Cannibalism.

Reference

Anti-Cathepsin K/CTSK Antibody被引用在1文献中。

Selected Validation Data



Western blot analysis of Cathepsin K expression in HELA whole cell lysates (lane 1) and 22RV1 whole cell lysates (lane 2). Cathepsin K at 45KD was detected using rabbit anti- Cathepsin K Antigen Affinity purified polyclonal antibody (Catalog # PB9856) at 0.5 μ g/mL. The blot was developed using chemiluminescence (ECL) method (Catalog # EK1002).